

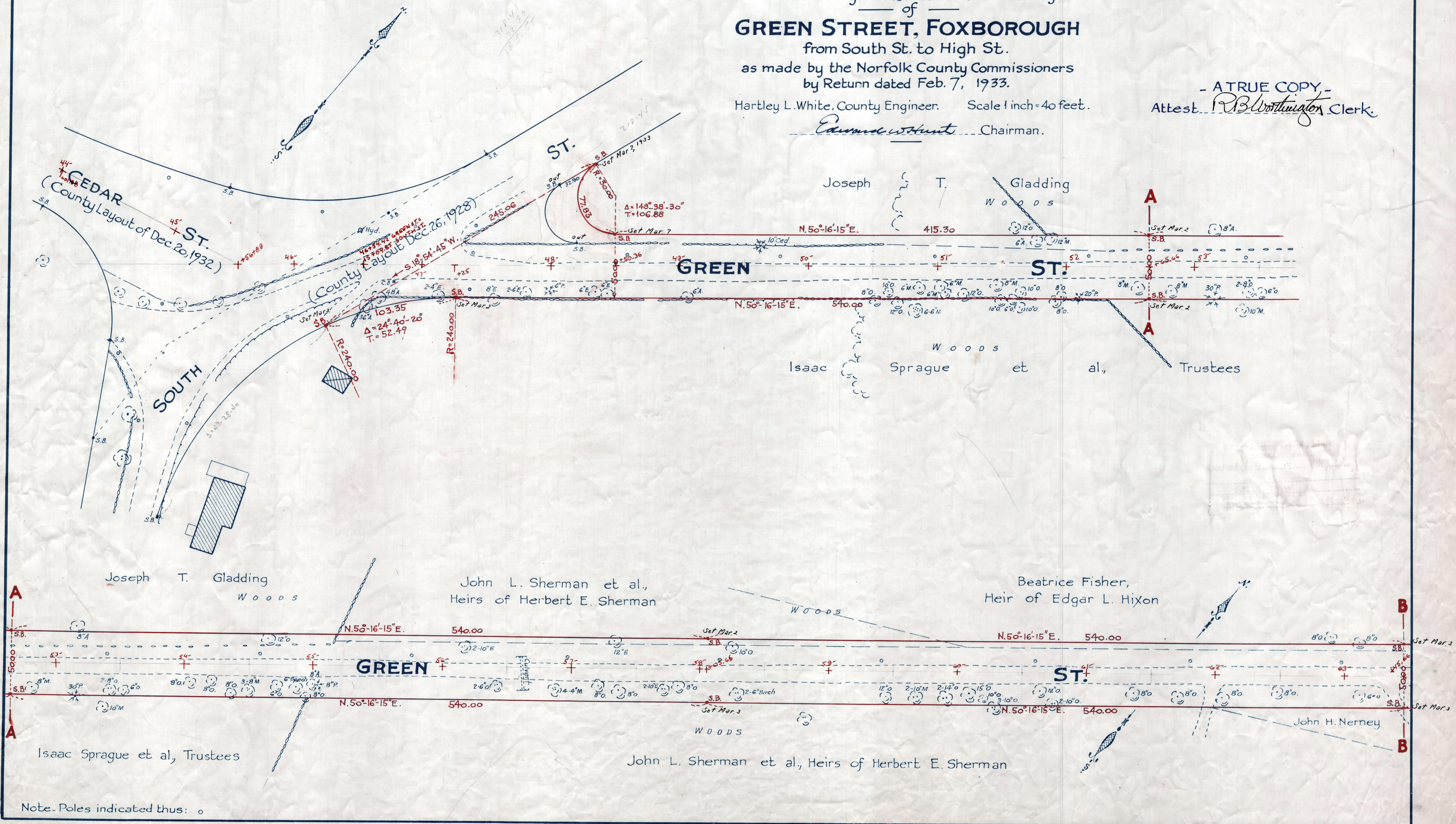
Plan showing the Relocation and Widening of **GREEN STREET, FOXBOROUGH**

from South St. to High St.
as made by the Norfolk County Commissioners
by Return dated Feb. 7, 1933.

Hartley L. White, County Engineer. Scale 1 inch = 40 feet.

Edward W. Hunt Chairman.

- A TRUE COPY -
Attest *R.B. Worthington* Clerk.



Note. Poles indicated thus: ○

Date of Entry March 3, 1933. 195

R.B. 116-7982
TAKING-1984-313
Rec 2-17-33