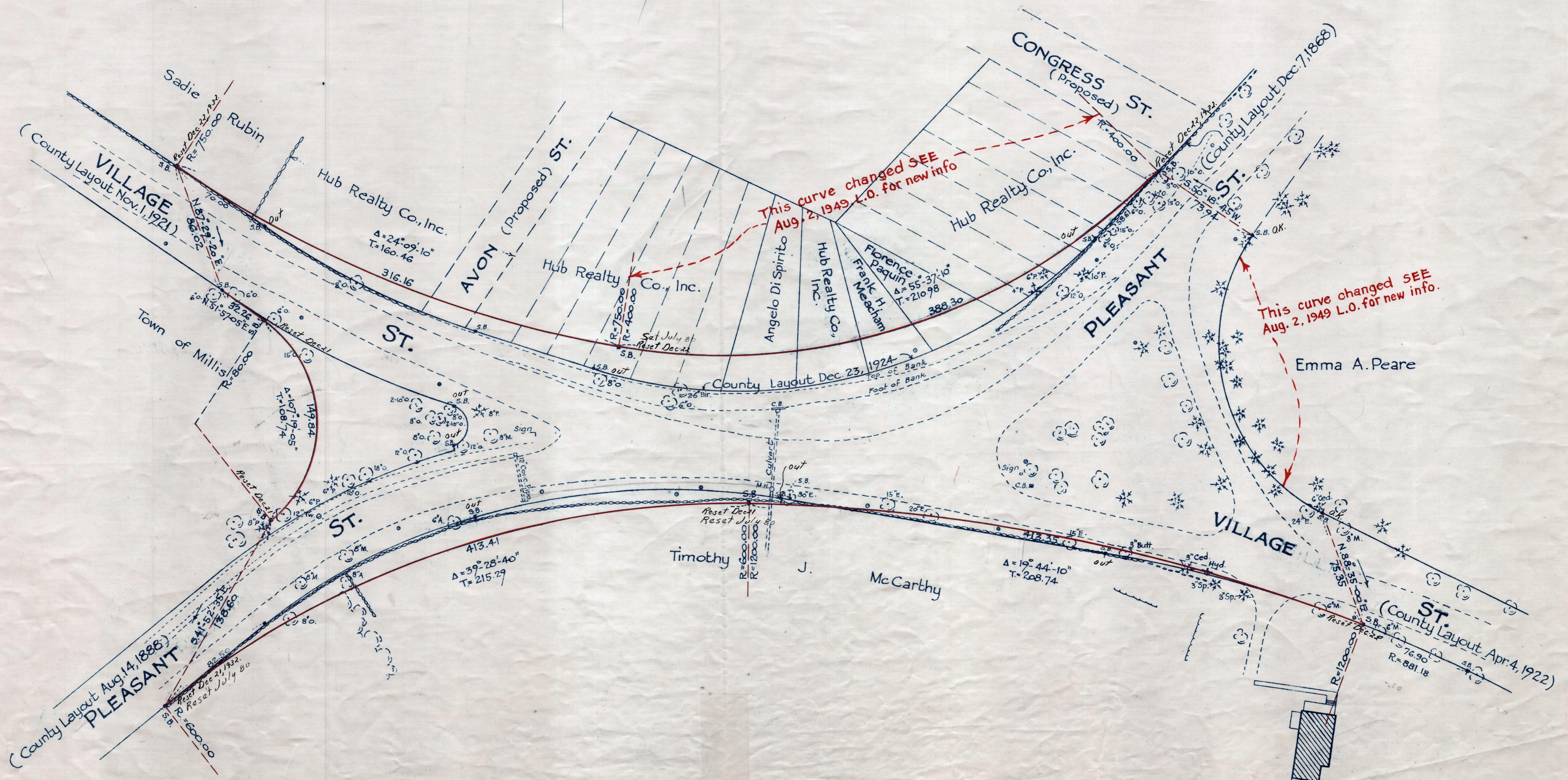
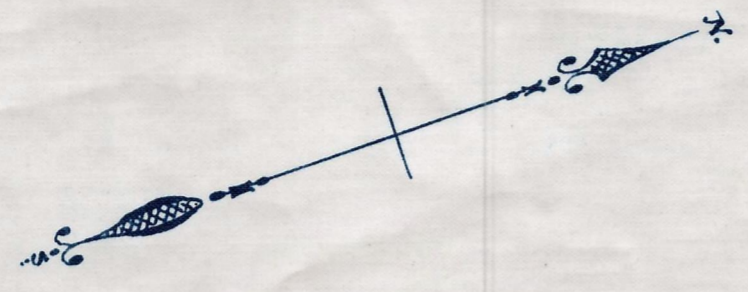


Plan showing the Relocation and Widening
 — at the junction of —
VILLAGE AND PLEASANT STS., MILLIS

as made by the Norfolk County Commissioners
 by Return dated Dec. 13, 1932.

Hartley L. White, County Engineer. Scale 1 inch = 40 feet.

Edward W. Hunt Chairman.



Note. Poles indicated thus: •

Date of Entry Dec. 30, 1932

P.B. 116-615
 TAKING-1980-469
 Rec. 12-23-32