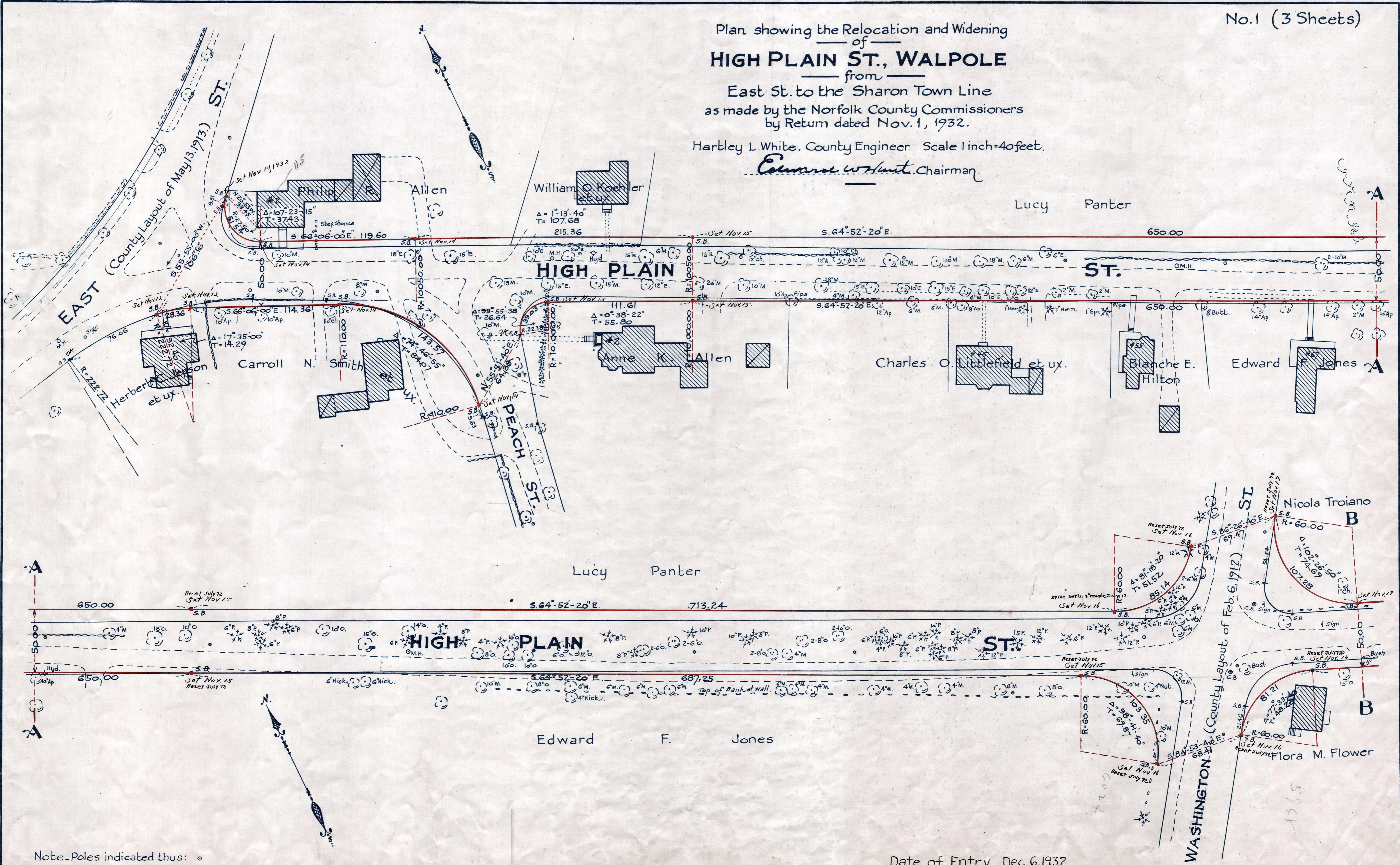


Plan showing the Relocation and Widening of HIGH PLAIN ST., WALPOLE

East St. to the Sharon Town Line
as made by the Norfolk County Commissioners
by Return dated Nov. 1, 1932.

Hartley L. White, County Engineer. Scale 1 inch = 40 feet.

Edward W. Hunt, Chairman.



Note - Poles indicated thus: ○

Date of Entry Dec 6, 1932

P.B. 116-533-35
TAKING-1977-561
Rec. 11-15-32