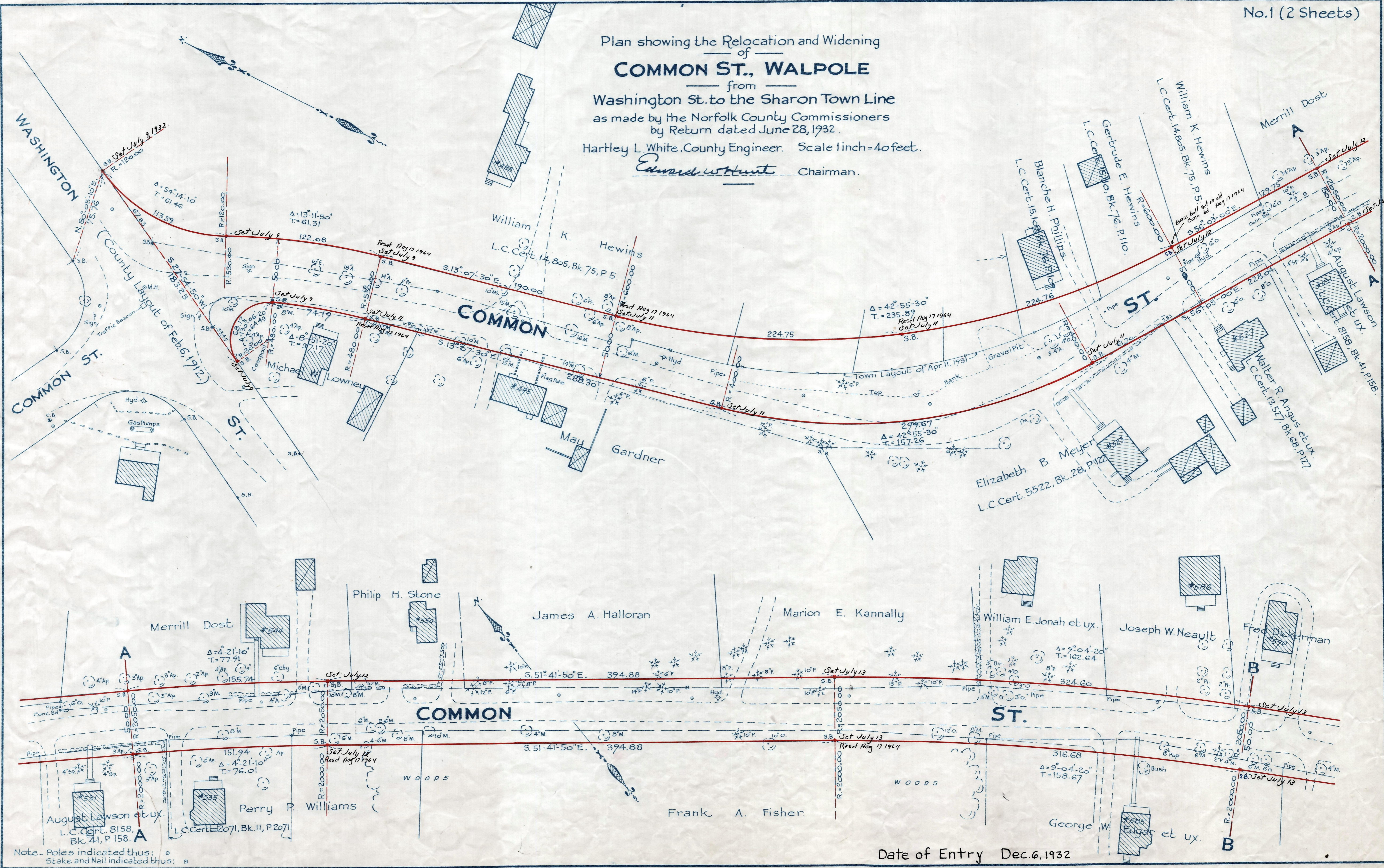


Plan showing the Relocation and Widening
 of
COMMON ST., WALPOLE
 from
 Washington St. to the Sharon Town Line
 as made by the Norfolk County Commissioners
 by Return dated June 28, 1932.
 Hartley L. White, County Engineer. Scale 1 inch = 40 feet.
Edward W. Hunt Chairman.



Note - Poles indicated thus:
 Stake and Nail indicated thus:

Date of Entry Dec. 6, 1932

P.B. 115-322-23186
 TAKING-1965-493
 Rec. 7-9-32