

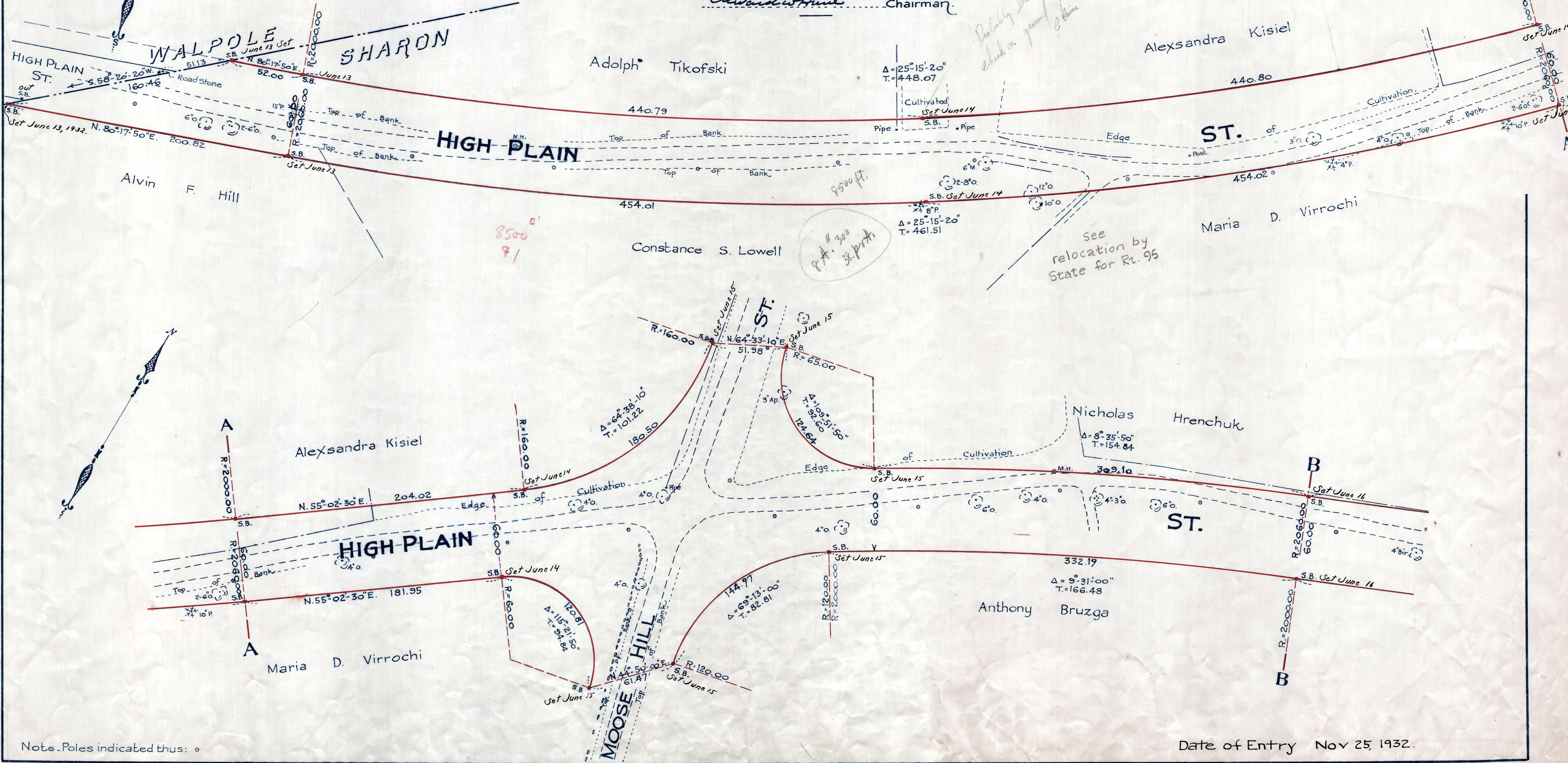
Plan showing the Relocation and Widening of HIGH PLAIN ST., SHARON

from the Walpole Town Line to Norwood St. as made by the Norfolk County Commissioners by Return dated June 7, 1932.

Hartley L. White, County Engineer. Scale 1 inch = 40 feet.

Edward W. Hunt Chairman.

Probably same lot check on ground July 1930



Note. Poles indicated thus: o

Date of Entry Nov 25, 1932.