

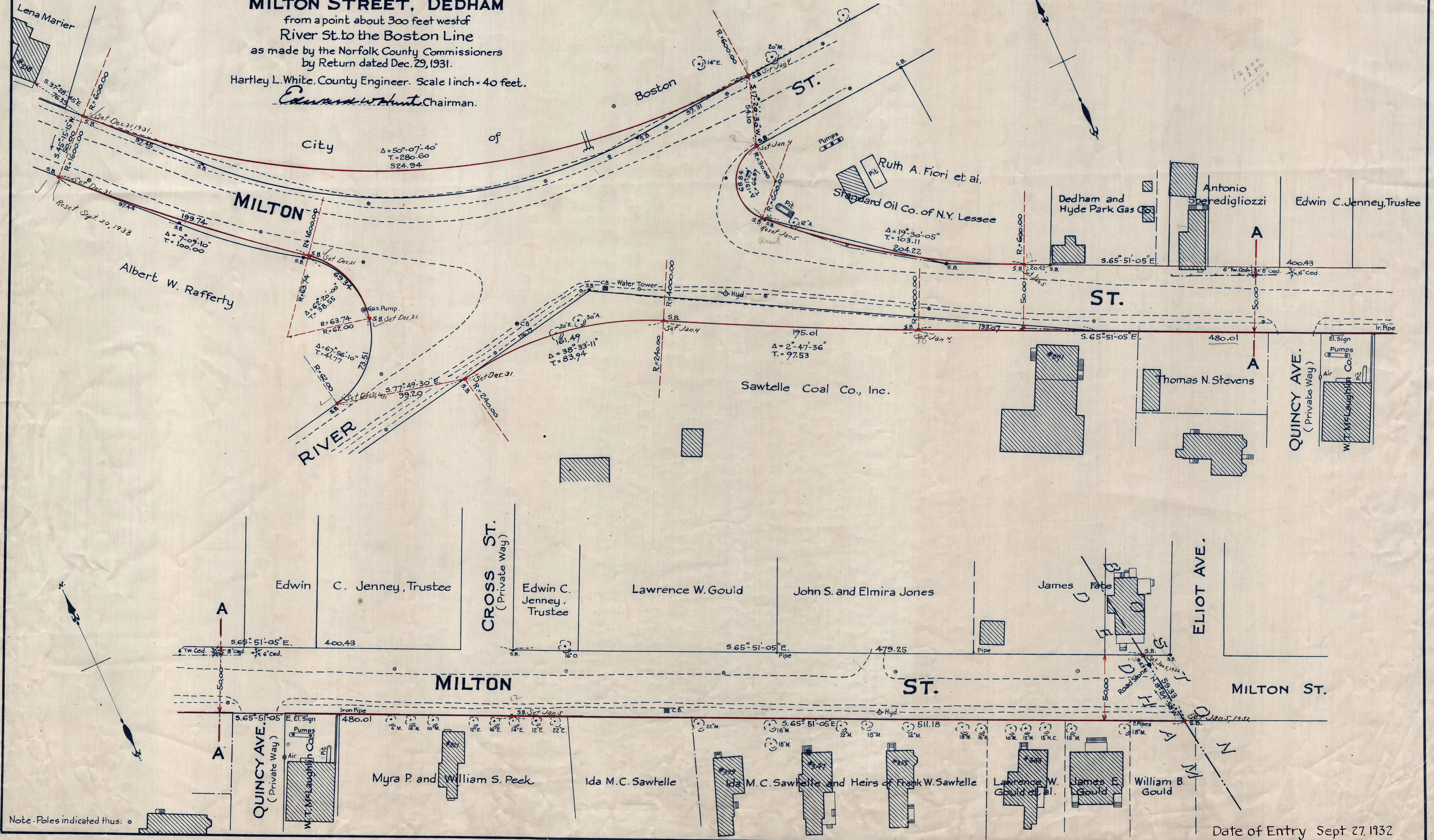
Plan showing the Relocation and Widening of

### MILTON STREET, DEDHAM

from a point about 300 feet west of River St. to the Boston Line as made by the Norfolk County Commissioners by Return dated Dec. 29, 1931.

Hartley L. White, County Engineer. Scale 1 inch = 40 feet.

*Edward W. Hunt*, Chairman.



Note - Poles indicated thus: ○

Date of Entry Sept 27, 1932

P.B. 115-10  
TAKING - 1952-321  
Rec. 1-1732