

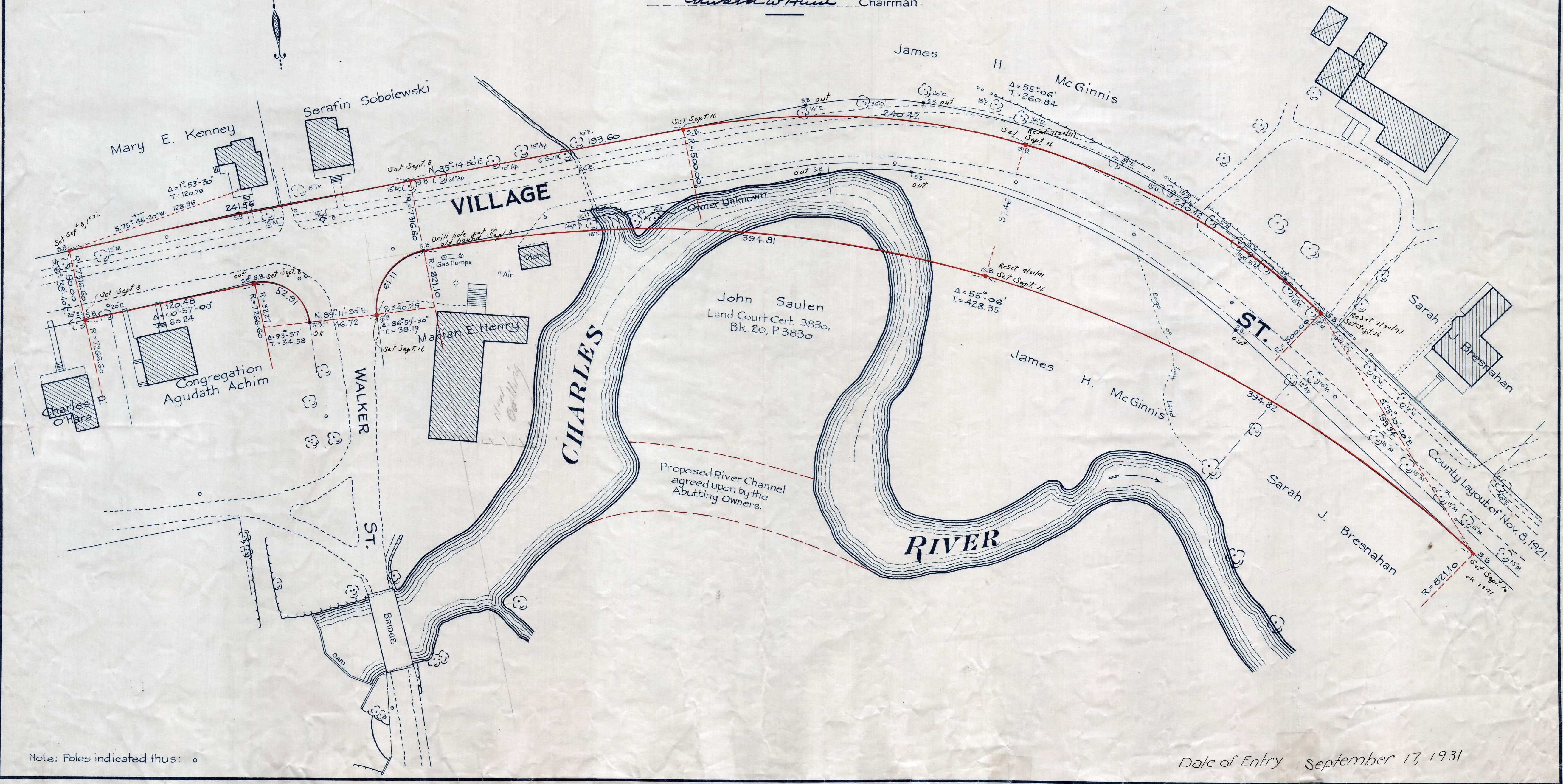
Plan showing the Relocation and Widening

# VILLAGE ST., MEDWAY

from a point about 150 feet west of Walker St.  
for a distance of about 1000 feet easterly  
as made by the Norfolk County Commissioners  
by Return dated Sept. 1, 1931.

Hartley L. White, County Engineer. Scale 1 inch = 40 feet.

*Edward White* Chairman.



Note: Poles indicated thus: ○

Date of Entry September 17, 1931

FB. 114-674  
TAKING-1939-561  
Rec. 9-4-31