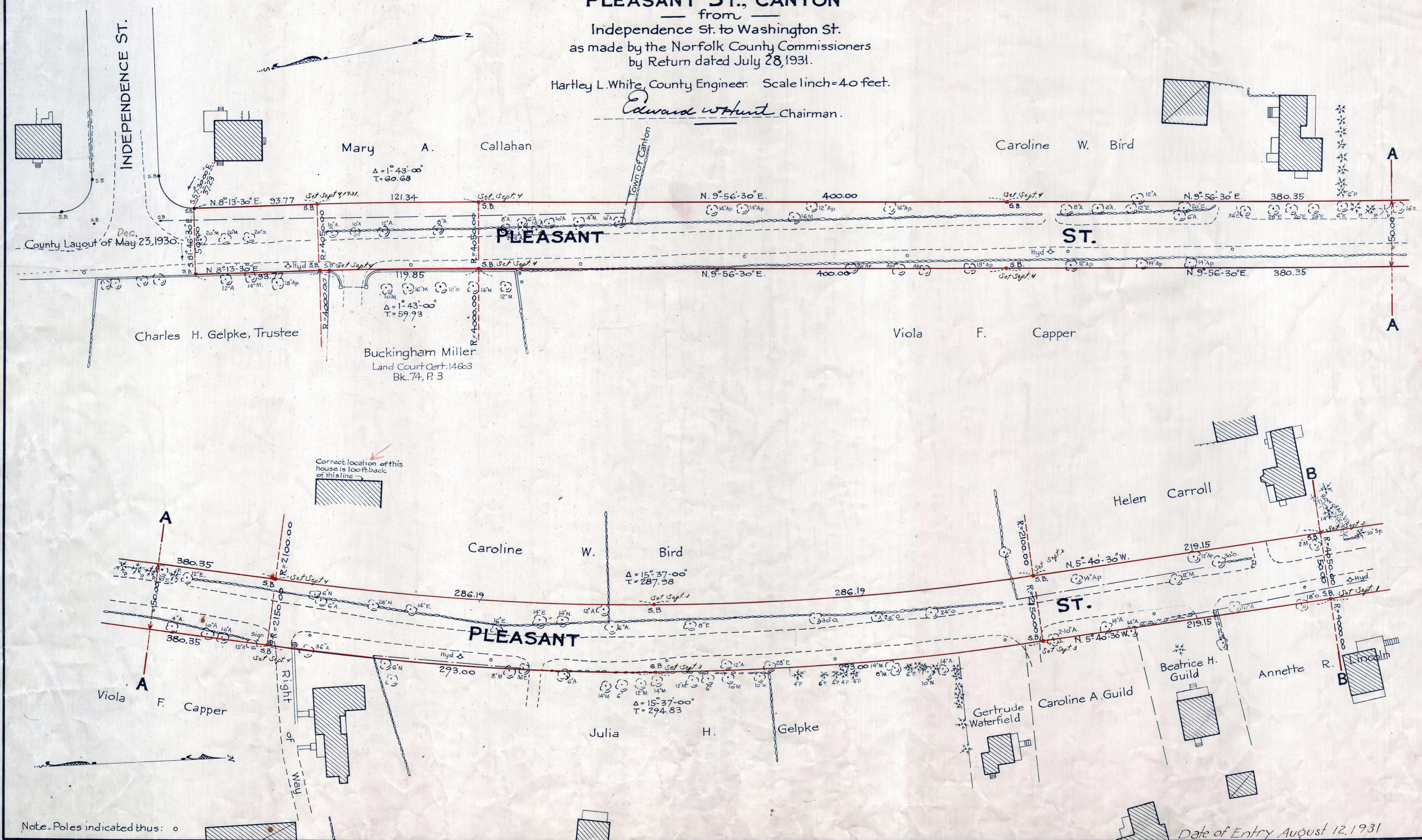


Plan showing the Relocation and Widening
of
PLEASANT ST., CANTON
from
Independence St. to Washington St.
as made by the Norfolk County Commissioners
by Return dated July 28, 1931.

Hartley L. White, County Engineer. Scale 1 inch = 40 feet.

Edward W. Hunt Chairman.



Note - Poles indicated thus: ○

Date of Entry August 12, 1931

P.B. 114-575-77
TAKING - 1936-381
Rec. 8-3-31