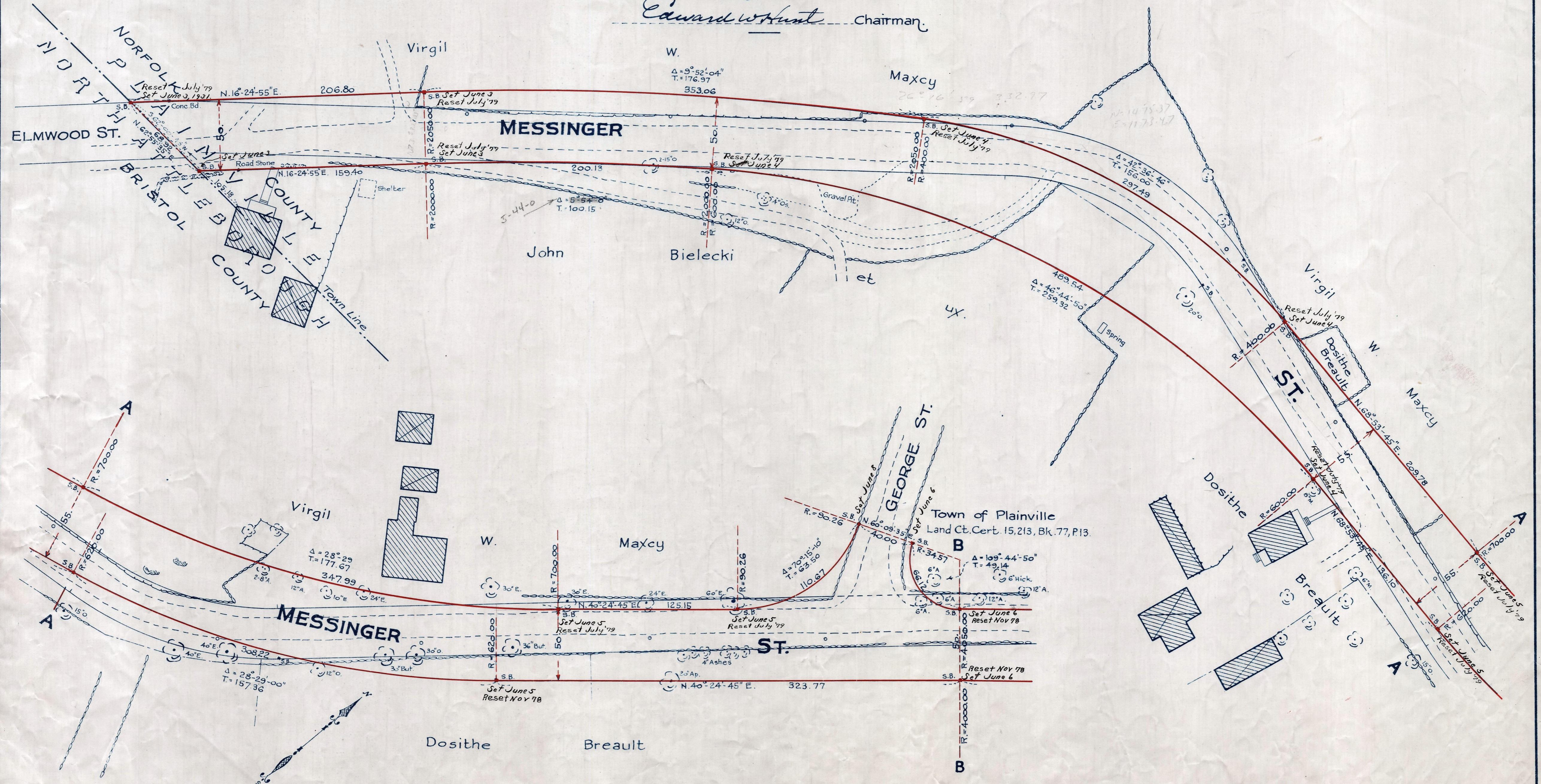


Plan showing the Relocation and Widening of MESSINGER ST., PLAINVILLE

Throughout its entire length
as made by the Norfolk County Commissioners
by Return dated June 2, 1931.

Hartley L. White, County Engineer. Scale 1 inch = 40 feet.

Edward W. Hunt Chairman.



Note. Poles indicated thus: o

Date of Entry June 8, 1931

P.B. 113-405-09
TAKING - 1930-561
Rec. 6-6-31