

Plan showing the Relocation and Widening
of
POND STREET, WESTWOOD
Throughout its entire length,
as made by the Norfolk County Commissioners
by Return dated April 28, 1931.
Hartley L. White, County Engineer. Scale 1 inch = 40 feet.

Edward W. Hunt Chairman

Emerette J. Wight

Wilfred de l'Etoile

Patrick J. Connors
(Bridget A. Connors, Guardian)
AIR PORT

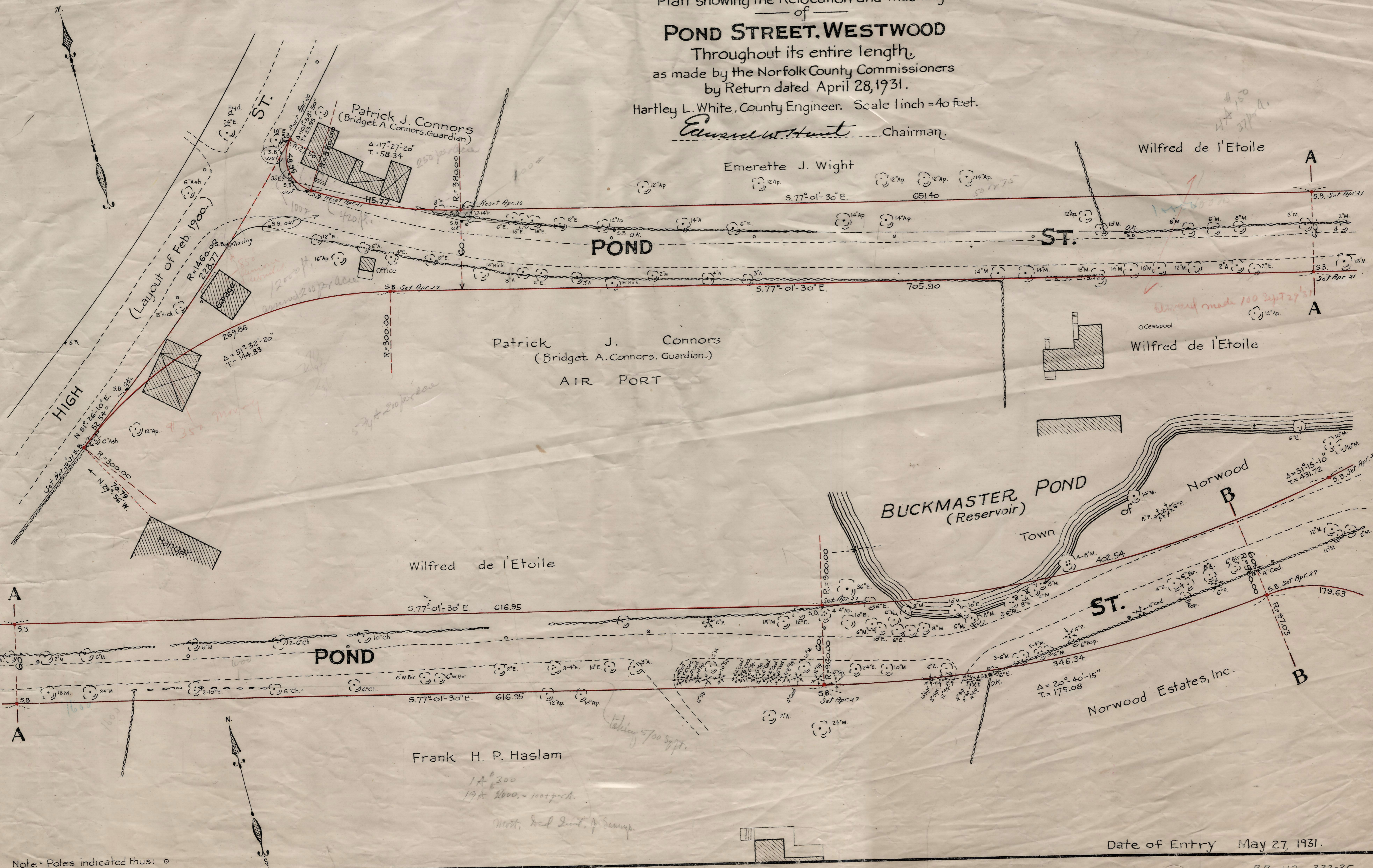
Wilfred de l'Etoile

BUCKMASTER POND
(Reservoir)
Town of Norwood

Norwood Estates, Inc.

Frank H. P. Haslam

Date of Entry May 27, 1931.



Note - Poles indicated thus: ○

P.B. 113-332-35
TAKING - 1927-621
Rec. 5-8-31