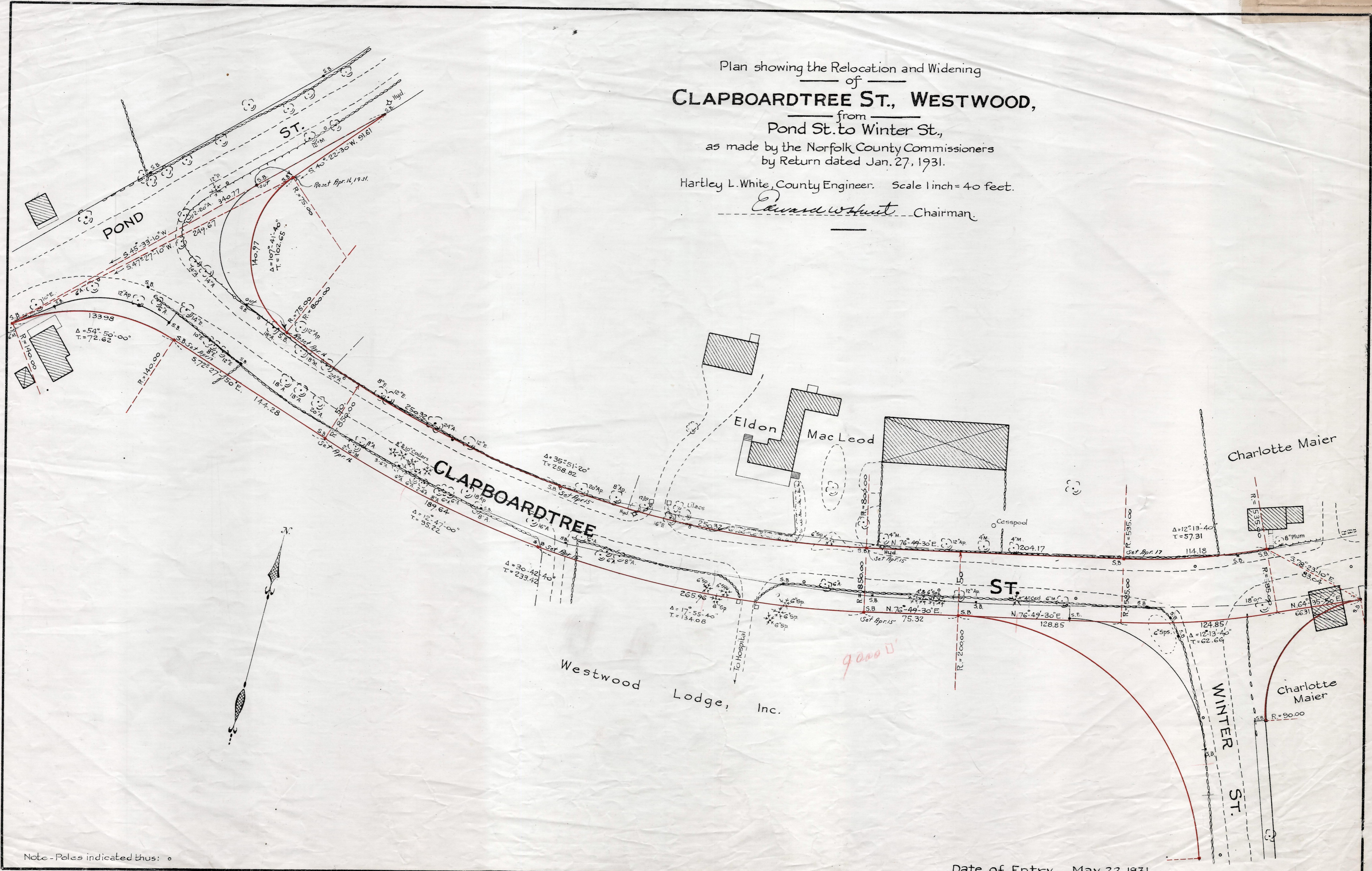


Plan showing the Relocation and Widening
of
CLAPBOARDTREE ST., WESTWOOD,
from
Pond St. to Winter St.,
as made by the Norfolk County Commissioners
by Return dated Jan. 27, 1931.

Hartley L. White, County Engineer. Scale 1 inch = 40 feet.

Edward W. Hunt Chairman



Note - Poles indicated thus: \circ

Date of Entry May 22, 1931

P.B. 113-75
TAKING - 1919-493
Rec. 2-7-31