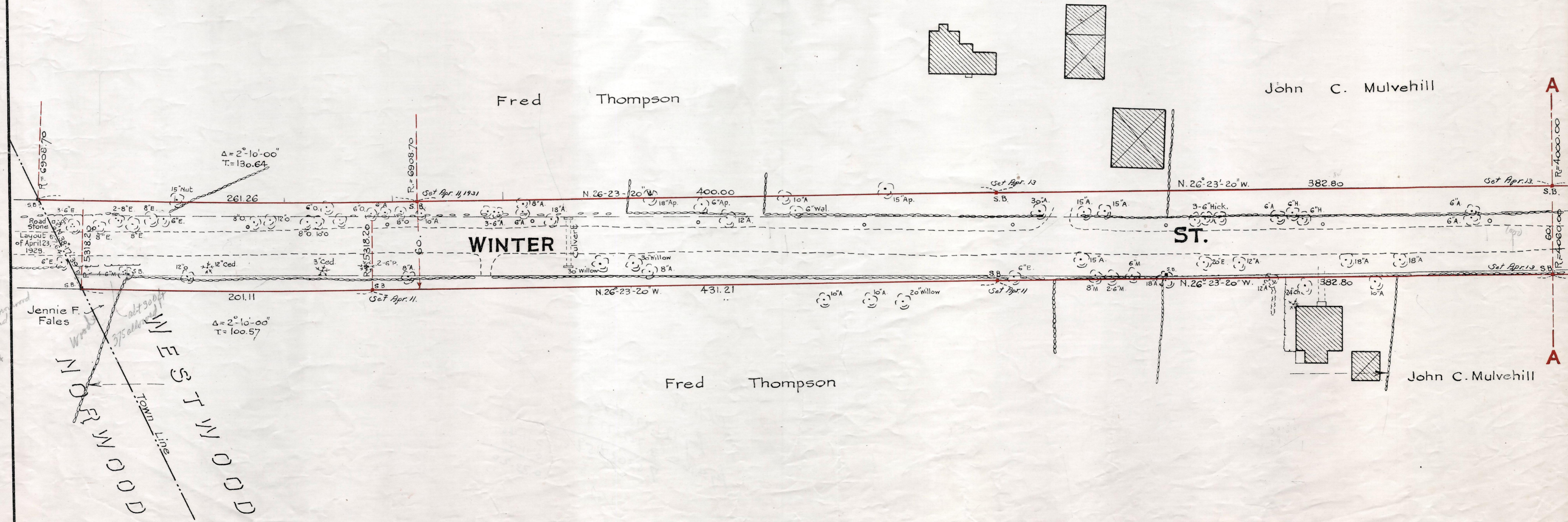
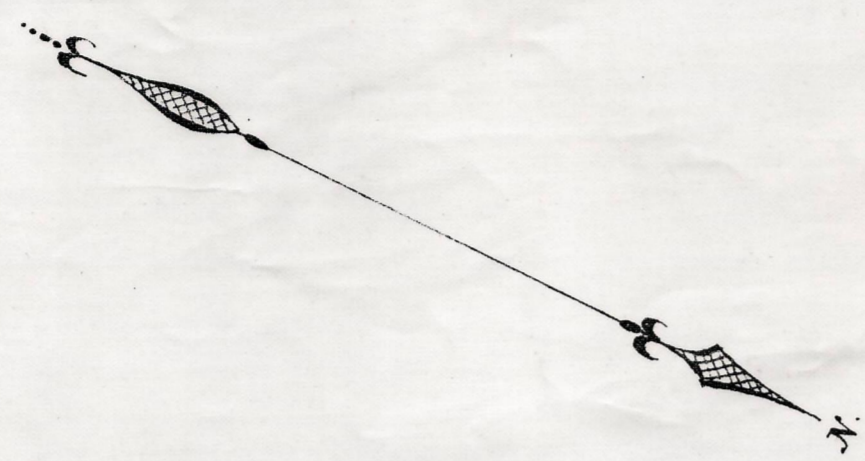


Plan showing the Relocation and Widening
of
WINTER ST., WESTWOOD
from
The Norwood Town Line to Clapboardtree St.
as made by the Norfolk County Commissioners
by Return dated Jan. 27, 1931.

Hartley L. White, County Engineer. Scale, 1 inch = 40 feet.

Edward W. Hunt Chairman.



*23.30 W. M. road
15' away
334
100 part*

*at 300 ft
375' along*

NORWOOD
WESTWOOD
Town Lines

Note - Poles indicated thus: o

Date of Entry April 25, 1931

P.B. 113-73-74
TAKING - 1919-490
Rec. 2-7-31