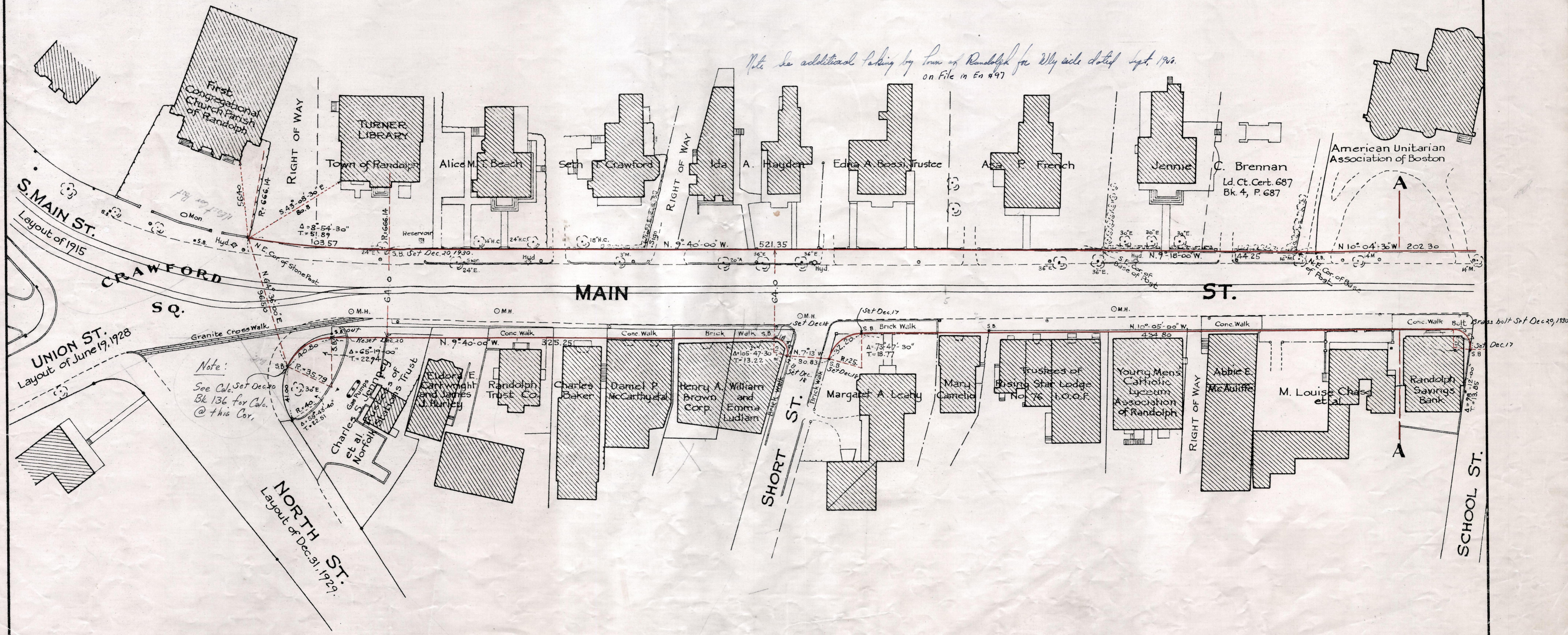


Plan showing the Relocation and Widening of MAIN STREET, RANDOLPH

from
Crawford Sq. to the N. Y., N. H. & H. R. R.
as made by the Norfolk County Commissioners
by Return dated Dec. 2, 1930
Hartley L. White, County Engineer. Scale 1 inch = 40 feet.

Edward L. White Chairman

*Note: See additional taking by Town of Randolph for W. side dated Sept. 1900
on file in En 497*



Note:
See Calc. Set Dec 20
Blk 136 for Calc.
@ this Cor.

Note. Poles indicated thus: ●

Date of Entry October 27, 1931

P.B. 112 - 853-854
TAKING - 1915 - 303
Rec. 12-18-30