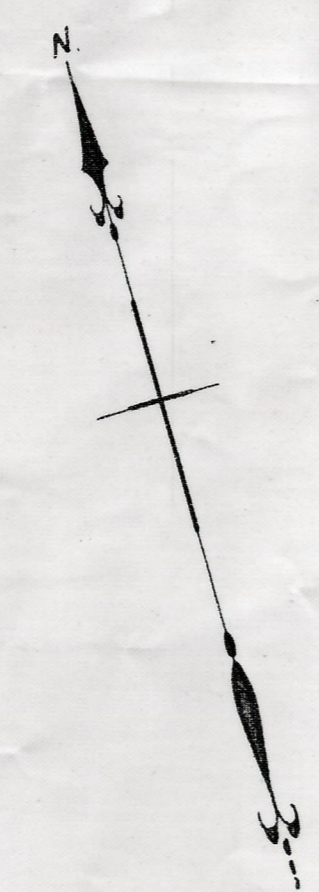
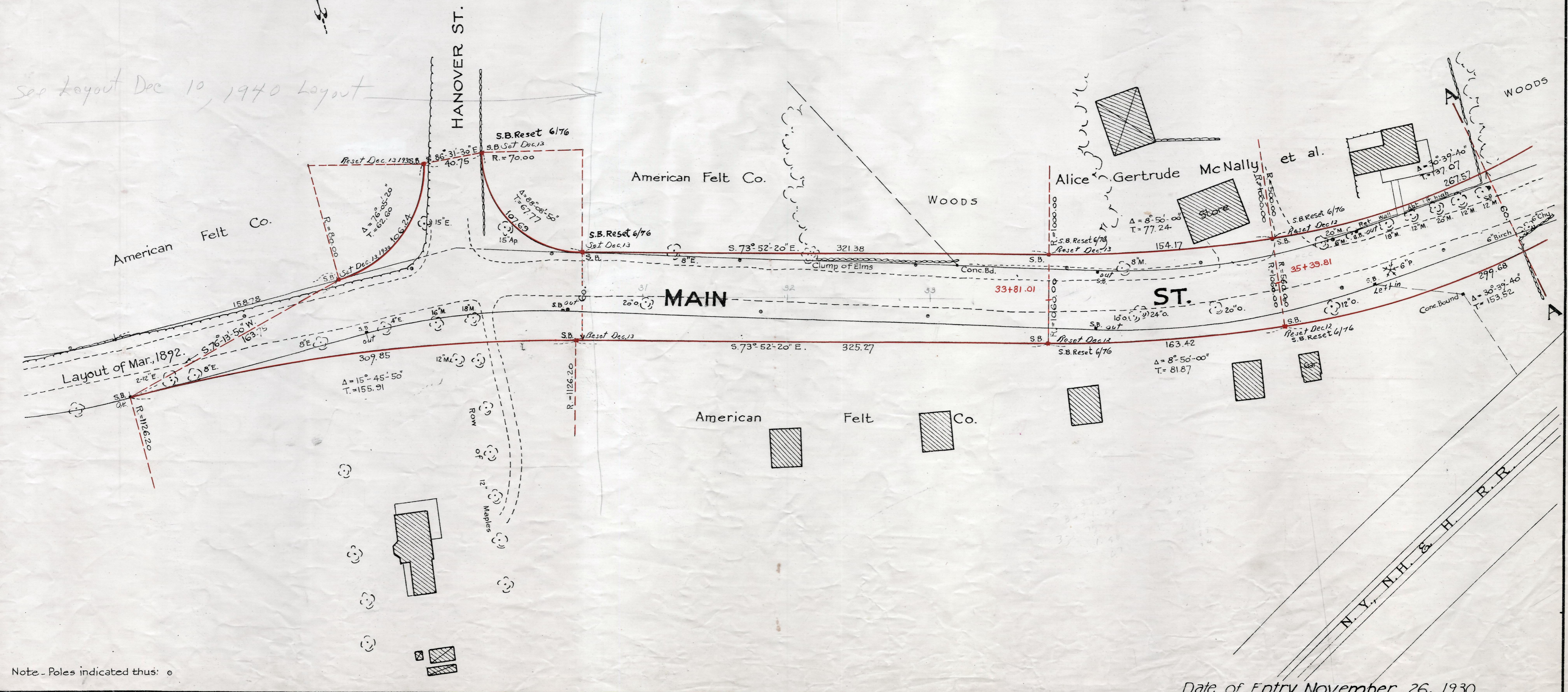


Plan showing the Relocation and Widening  
of  
**MAIN ST., NORFOLK**  
from  
Hanover St. to Myrtle St.  
as made by the Norfolk County Commissioners  
by Return dated November 4, 1930.  
Hartley L. White, County Engineer. Scale 1 inch = 40 feet.  
*Edward W. Hunt*, Chairman.



*See layout Dec 10, 1940 layout*



Note - Poles indicated thus: o

Date of Entry November 26, 1930

P.B. 112-810-811  
TAKING-1711-493  
Rec. 11-13-30