

Plan showing the Relocation and Widening of  
**PINE ST., NORFOLK**  
from the N.Y., N.H. & H. R.R. to the Foxborough Town Line  
as made by the Norfolk County Commissioners  
by Return dated Oct. 7, 1930.

Hartley L. White, County Engineer. Scale 1 inch = 40 feet.

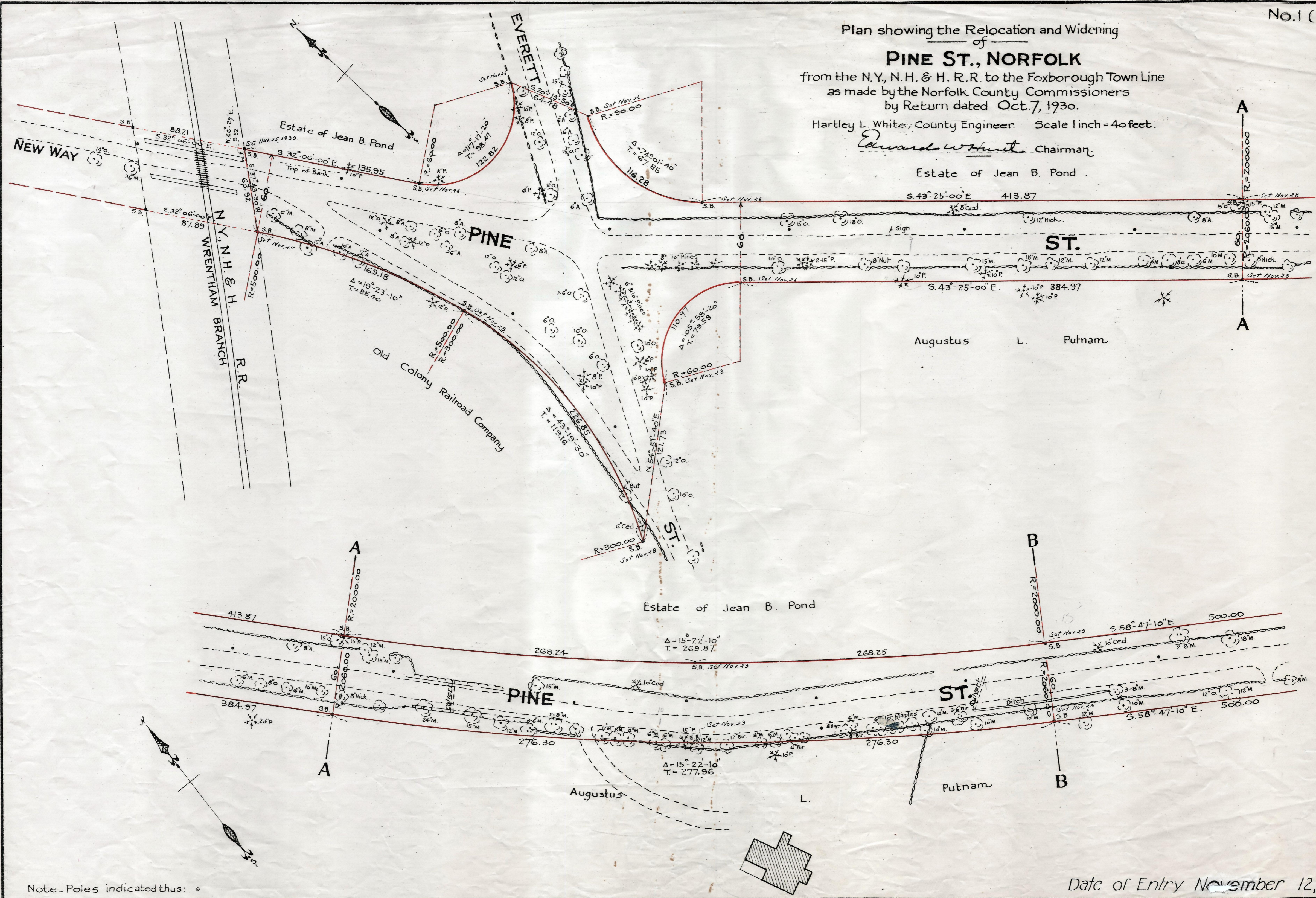
*Edward W. Hunt* Chairman.

Estate of Jean B. Pond.

S. 43° 25' 00" E. 413.87

S. 43° 25' 00" E. 384.97

Augustus L. Putnam



Estate of Jean B. Pond

PINE ST.

Augustus L. Putnam

PINE ST.

Putnam

Note - Poles indicated thus: °

Date of Entry November 12, 1930

P.B. 112-783-784  
TAKING - 1910-150  
Rec. 10-28-30