

Plan showing the Relocation and Widening
of

WASHINGTON ST., DEDHAM,

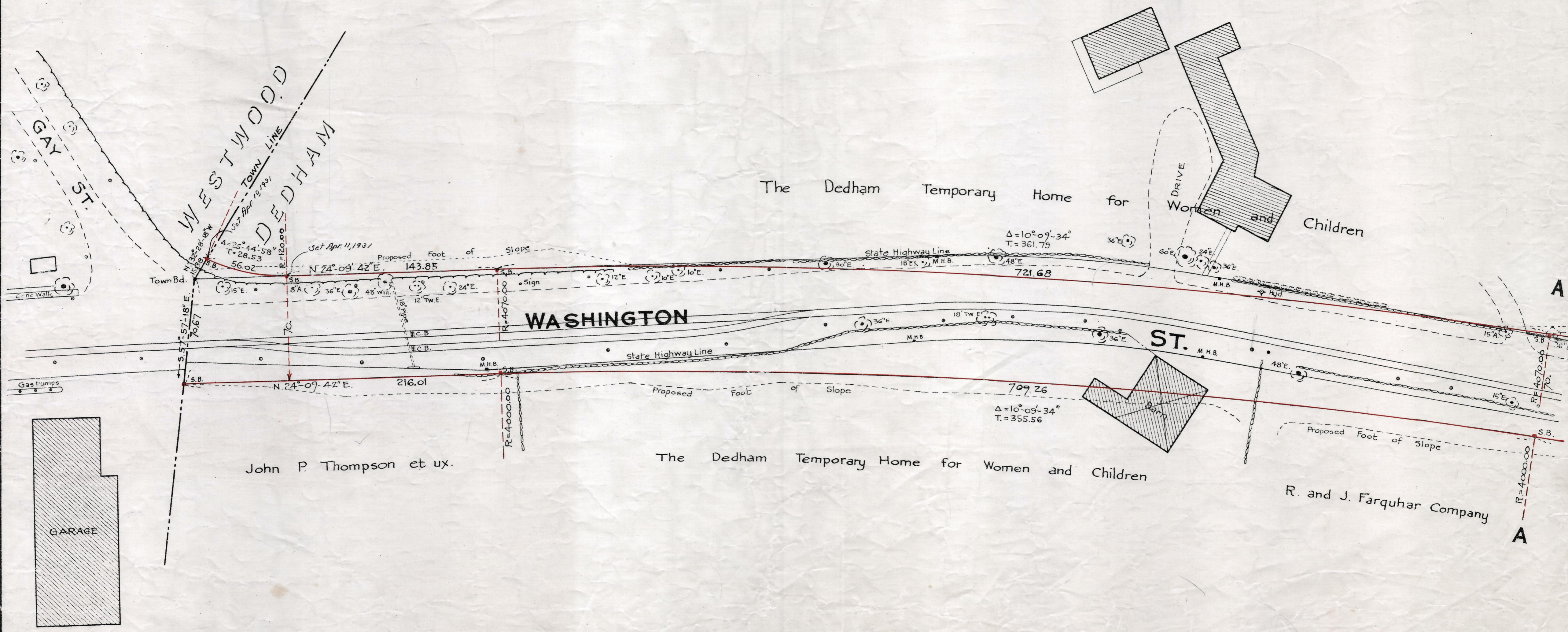
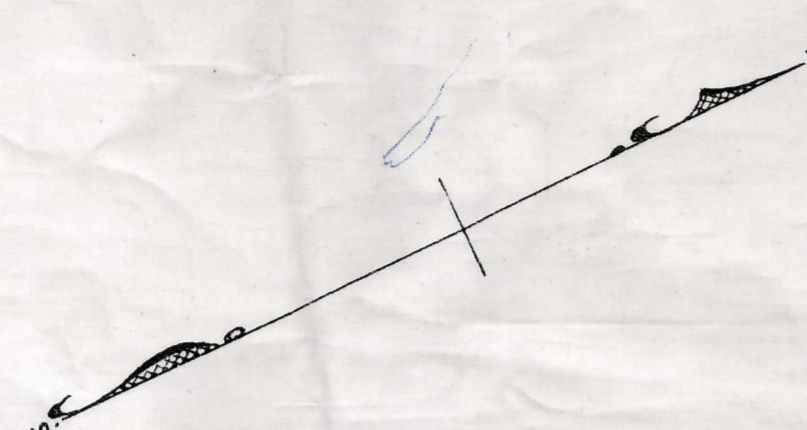
from

The Westwood Town Line to Court St.

as made by the Norfolk County Commissioners
by Return dated October 7, 1930.

Hartley L. White, County Engineer. Scale 1 inch = 40 feet.

Edward W. Hunt Chairman.



Note: Poles indicated thus: ○

Date of Entry November 5, 1930

P. B. 112-788-790
 TAKING - 1910-261
 Rec. 10-30-30