

Plan showing the Relocation and Widening of **ELM STREET, BRAINTREE**

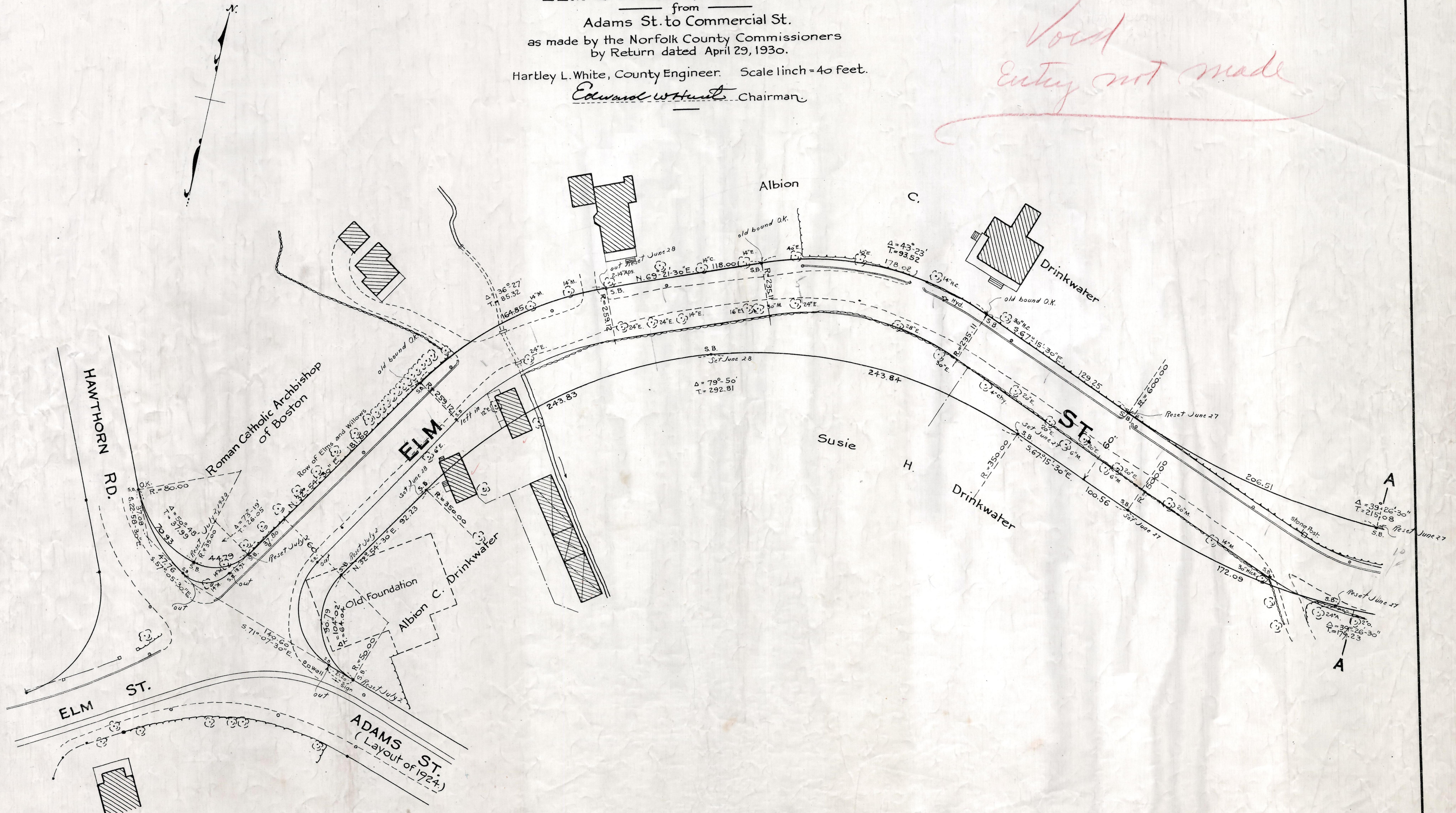
from
Adams St. to Commercial St.
as made by the Norfolk County Commissioners
by Return dated April 29, 1930.

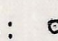
Hartley L. White, County Engineer. Scale 1 inch = 40 Feet.

Edward W. Hunt, Chairman

*Non entry filed in reg. 1961/1/45
May 11, 1932*

*Void
Entry not made*



Note. Poles indicated thus: 

No Entry

TAKING 1891-245	} EAD REF.
P.B. 111-416-7 of 30	
Rec. MAY 14, 1930	