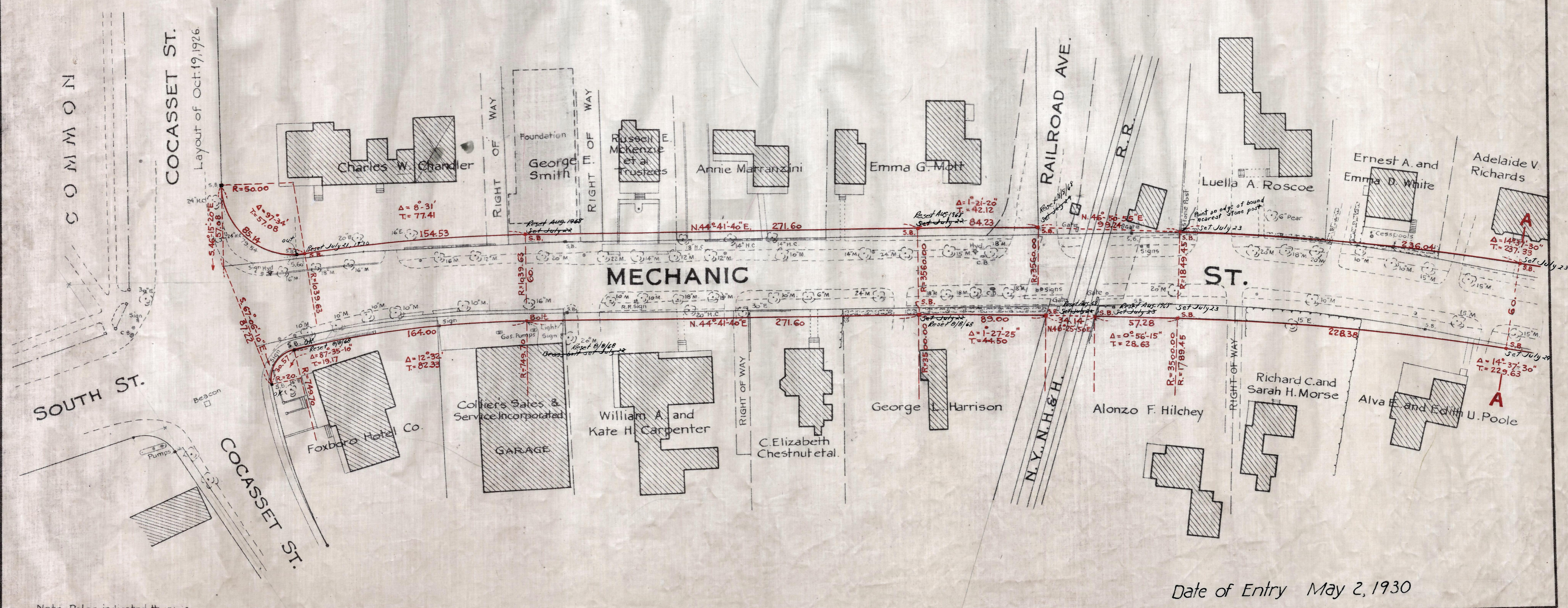
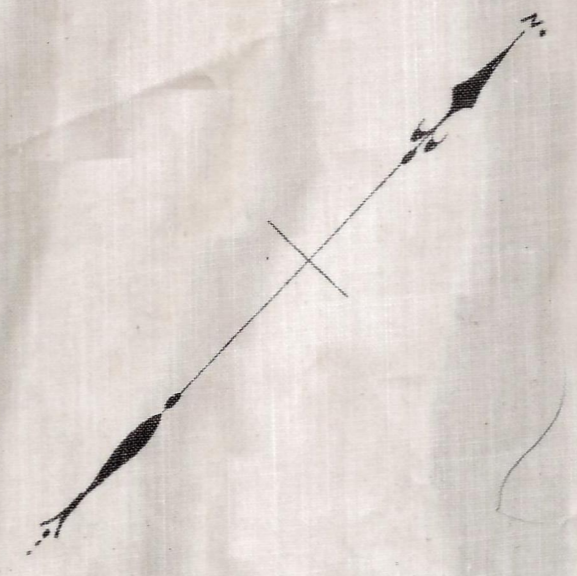


Plan showing the Relocation and Widening  
of  
**MECHANIC ST., FOXBOROUGH**  
from  
Cocasset St. to Chestnut St.

as made by the Norfolk County Commissioners  
by Return dated April 1, 1930.  
Hartley L. White, County Engineer. Scale 1 inch = 40 feet.  
Edward W. Hunt Chairman.

A TRUE COPY  
Attest: R. B. Worthington Clerk

Recorded? Apr. 11, 1930  
Date of entry May 2, 1930  
Recorded 1887/415



Note: Poles indicated thus: ⊙

Date of Entry May 2, 1930

P.B. 111-244-246  
TAKING - 1887-415  
Rec. 4-11-30