

Plan showing the Relocation and Widening  
of

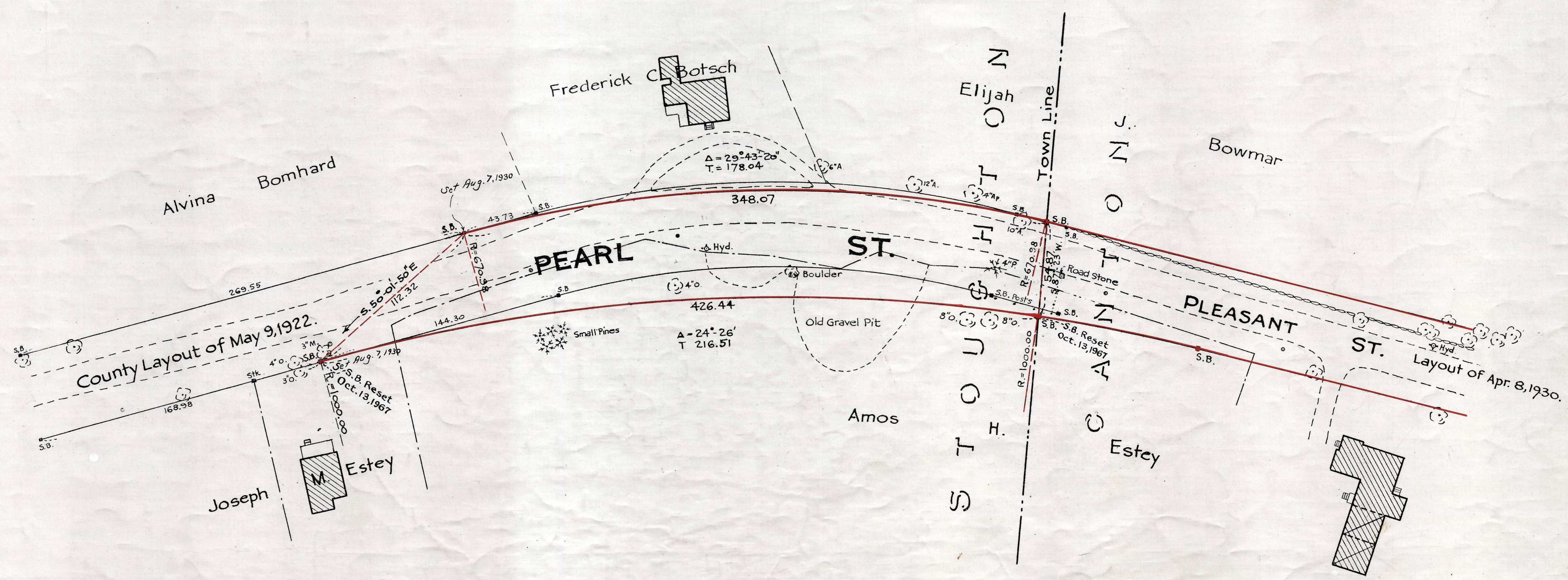
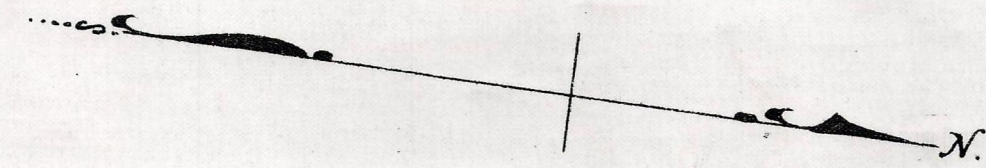
# PEARL ST., STOUGHTON

near the Canton Town Line

as made by the Norfolk County Commissioners  
by Return dated April 8, 1930

Hartley L. White, County Engineer. Scale 1 inch = 40 feet.

*Edmund W. Hunt*, Chairman.



Date of Entry July 8, 1930

P.B. 111-374  
TAKING - 1889-565  
Rec - 5-1-30