

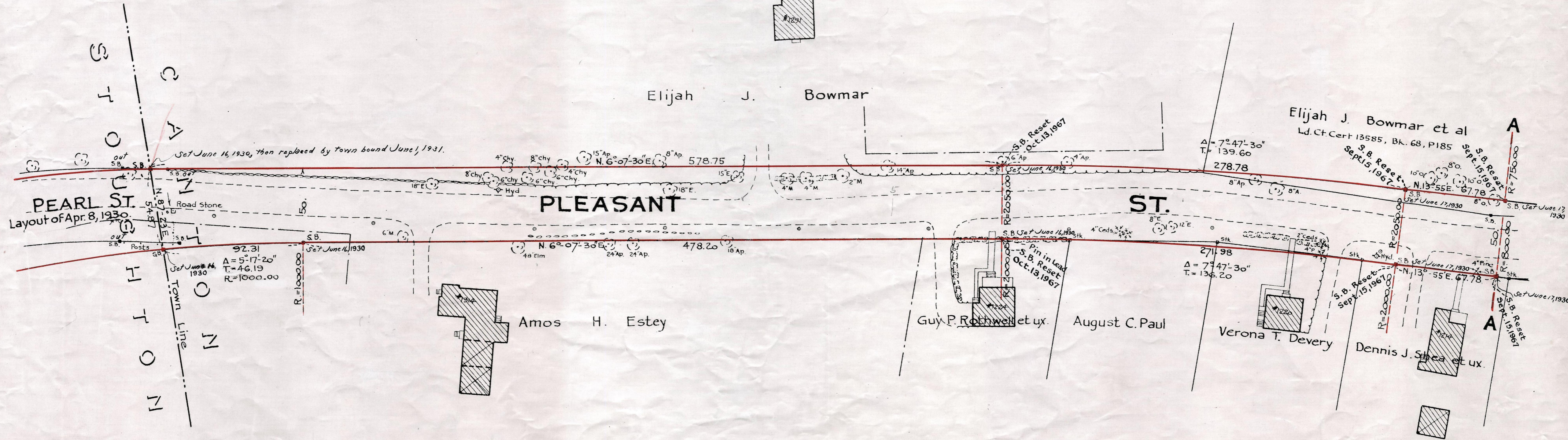
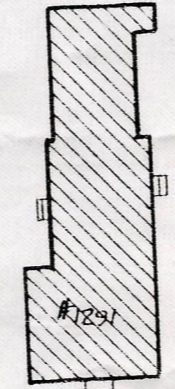
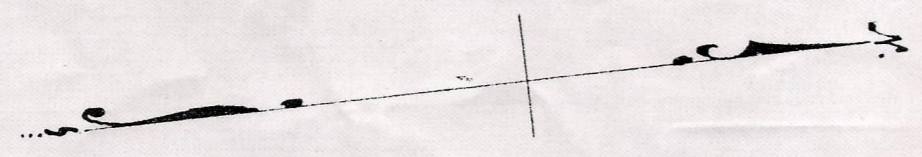
Plan showing the Relocation and Widening  
of  
**PLEASANT ST., CANTON**  
from

The Stoughton Town Line to Pine St.

as made by the Norfolk County Commissioners  
by Return dated April 8, 1930.

Hartley L. White, County Engineer. Scale 1 inch = 40 feet.

*E. L. White* Chairman



Note - Poles indicated thus:  $\circ$

Date of Entry May 9, 1930

P.B. 111-375-377  
TAKING - 1889-604  
REC - 5-1-30