

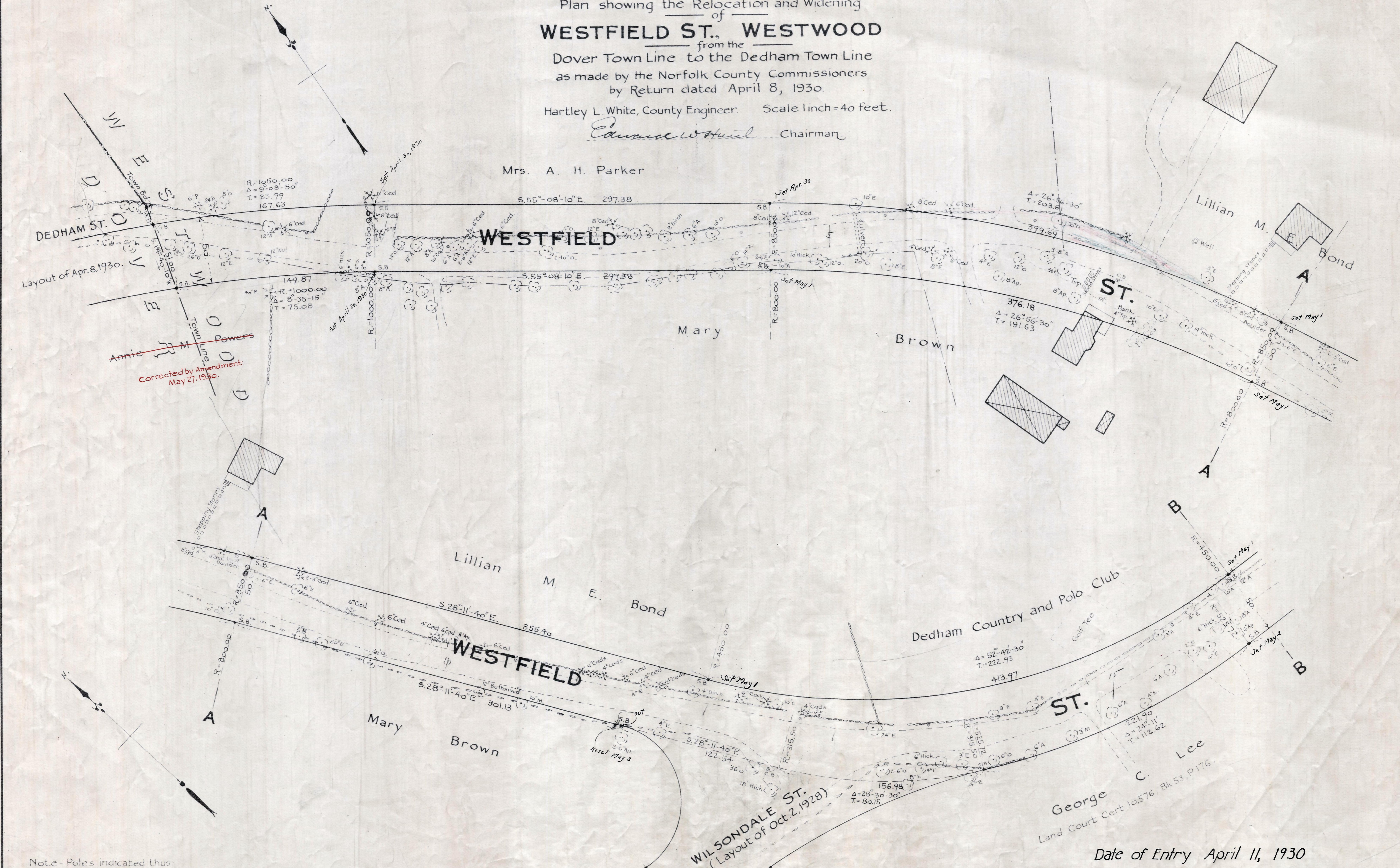
Plan showing the Relocation and Widening of WESTFIELD ST. WESTWOOD

Dover Town Line to the Dedham Town Line
as made by the Norfolk County Commissioners
by Return dated April 8, 1930.

Hartley L. White, County Engineer. Scale 1 inch = 40 feet.

Edward W. Hull Chairman

Mrs. A. H. Parker



Note - Poles indicated thus:

Date of Entry April 11, 1930

P.B. 111-250-251
TAKING - 1887-501
Rec - 4-14-30