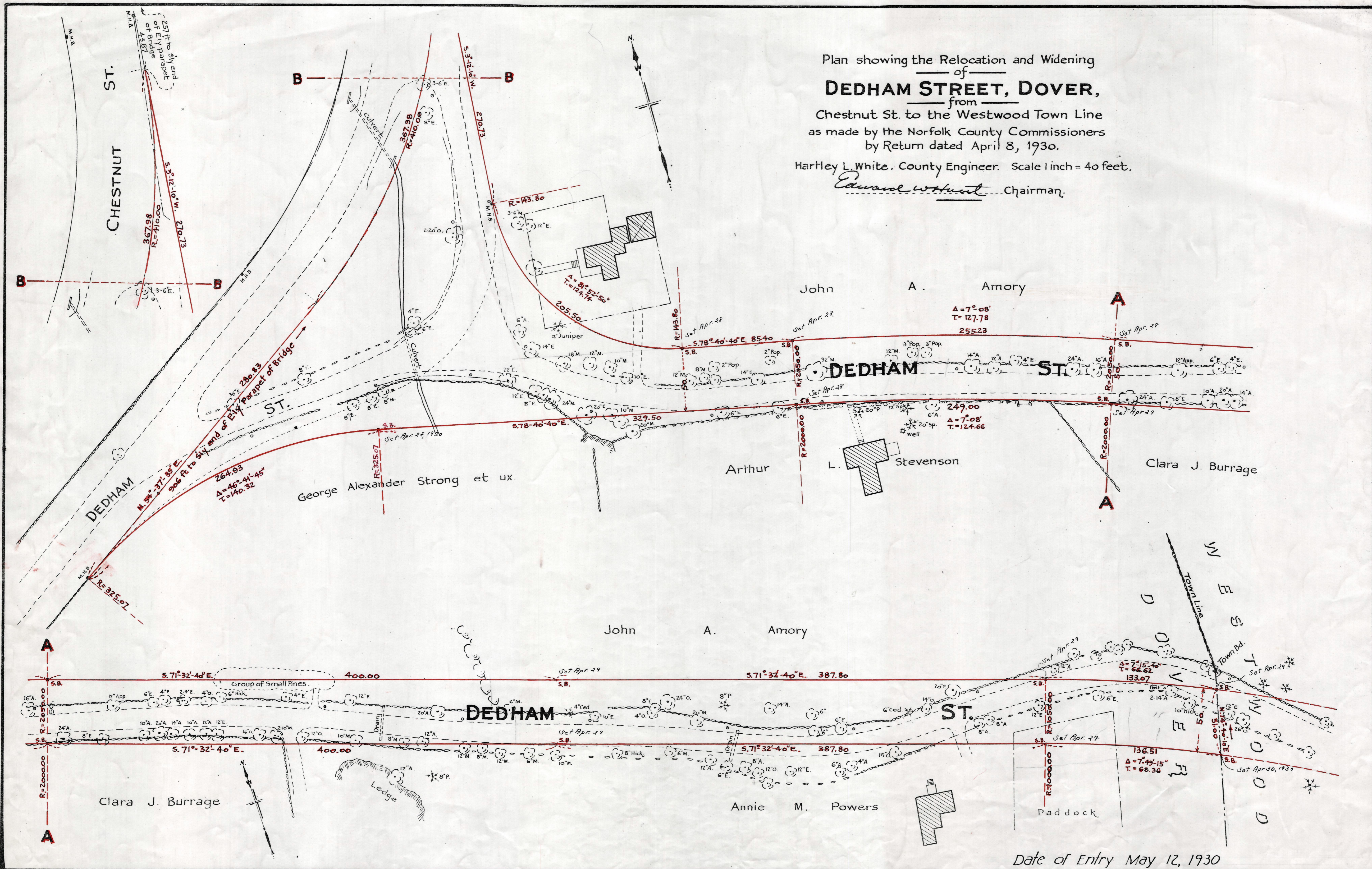


Plan showing the Relocation and Widening
of
DEDHAM STREET, DOVER,

from
Chestnut St. to the Westwood Town Line
as made by the Norfolk County Commissioners
by Return dated April 8, 1930.

Hartley L. White, County Engineer. Scale 1 inch = 40 feet.

Edward W. Hunt Chairman



Date of Entry May 12, 1930