

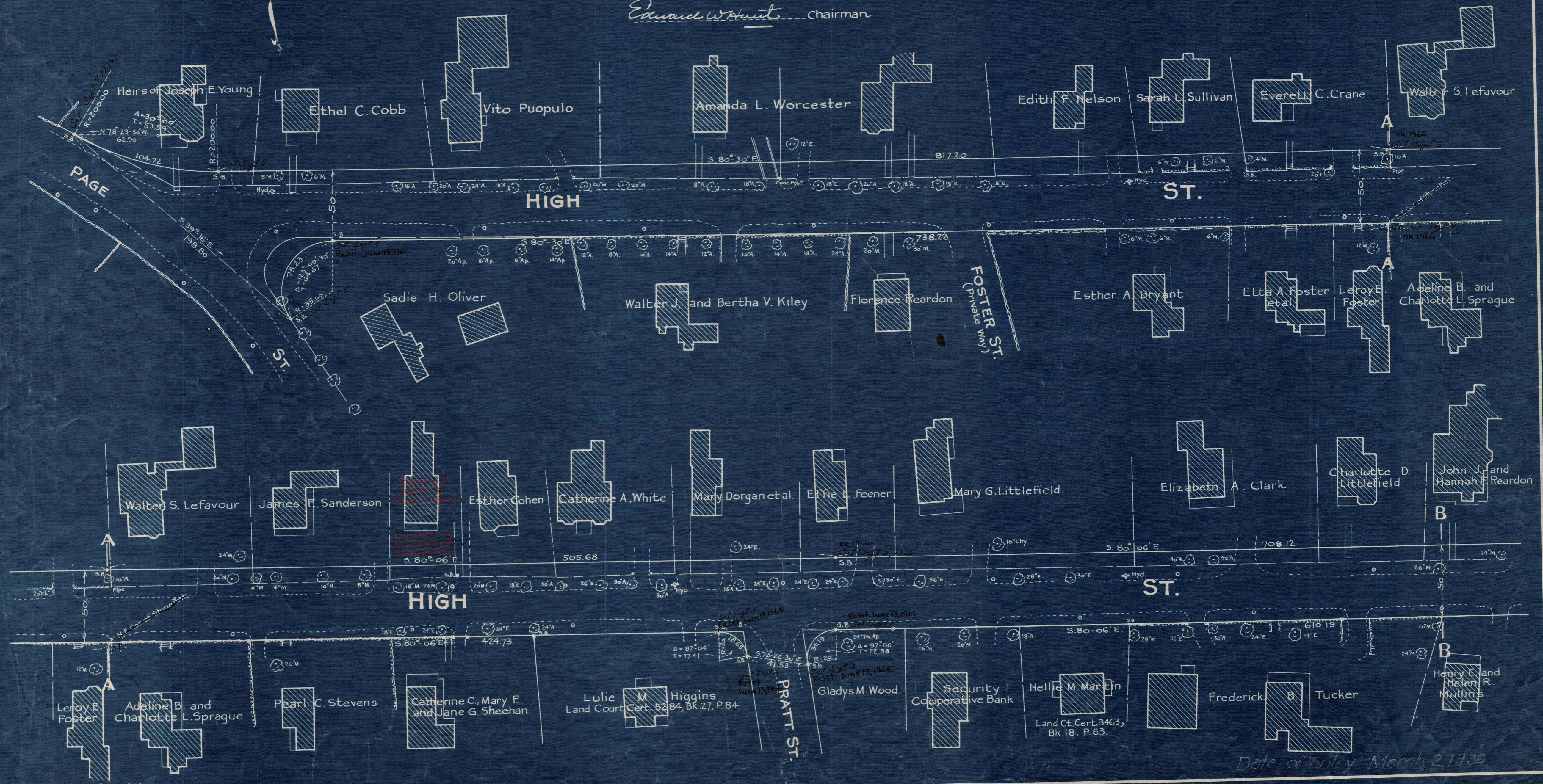
Plan showing the Relocation and Widening  
of  
**HIGH STREET, AVON.**

from  
Page Street to the N.Y., N.H. & H.R.R.  
as made by the Norfolk County Commissioners  
by Return dated Dec. 10, 1929.  
Hartley L. White, County Engineer. Scale 1 inch = 40 feet.

*Edward W. Hunt* Chairman

A TRUE COPY.

Attest *William E. Everett* Assistant Clerk.



Note. Poles indicated thus:

Date of Entry March 2, 1930