

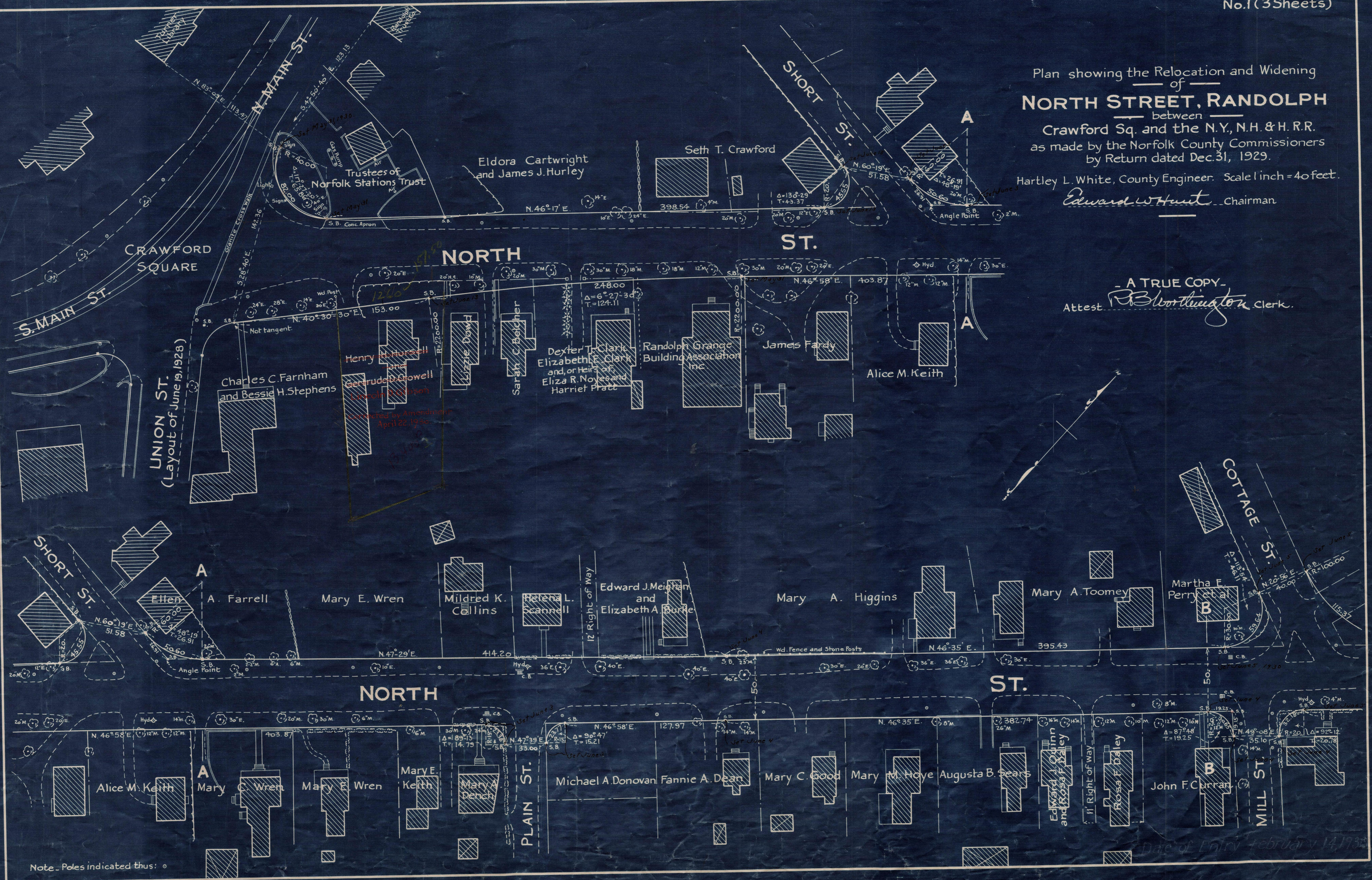
Plan showing the Relocation and Widening of NORTH STREET, RANDOLPH

between Crawford Sq. and the N.Y., N.H. & H. R.R. as made by the Norfolk County Commissioners by Return dated Dec. 31, 1929.

Hartley L. White, County Engineer. Scale 1 inch = 40 feet.

Edward W. Hunt Chairman

A TRUE COPY.
Attest *B. B. Worthington* Clerk.



Note - Poles indicated thus: ○