

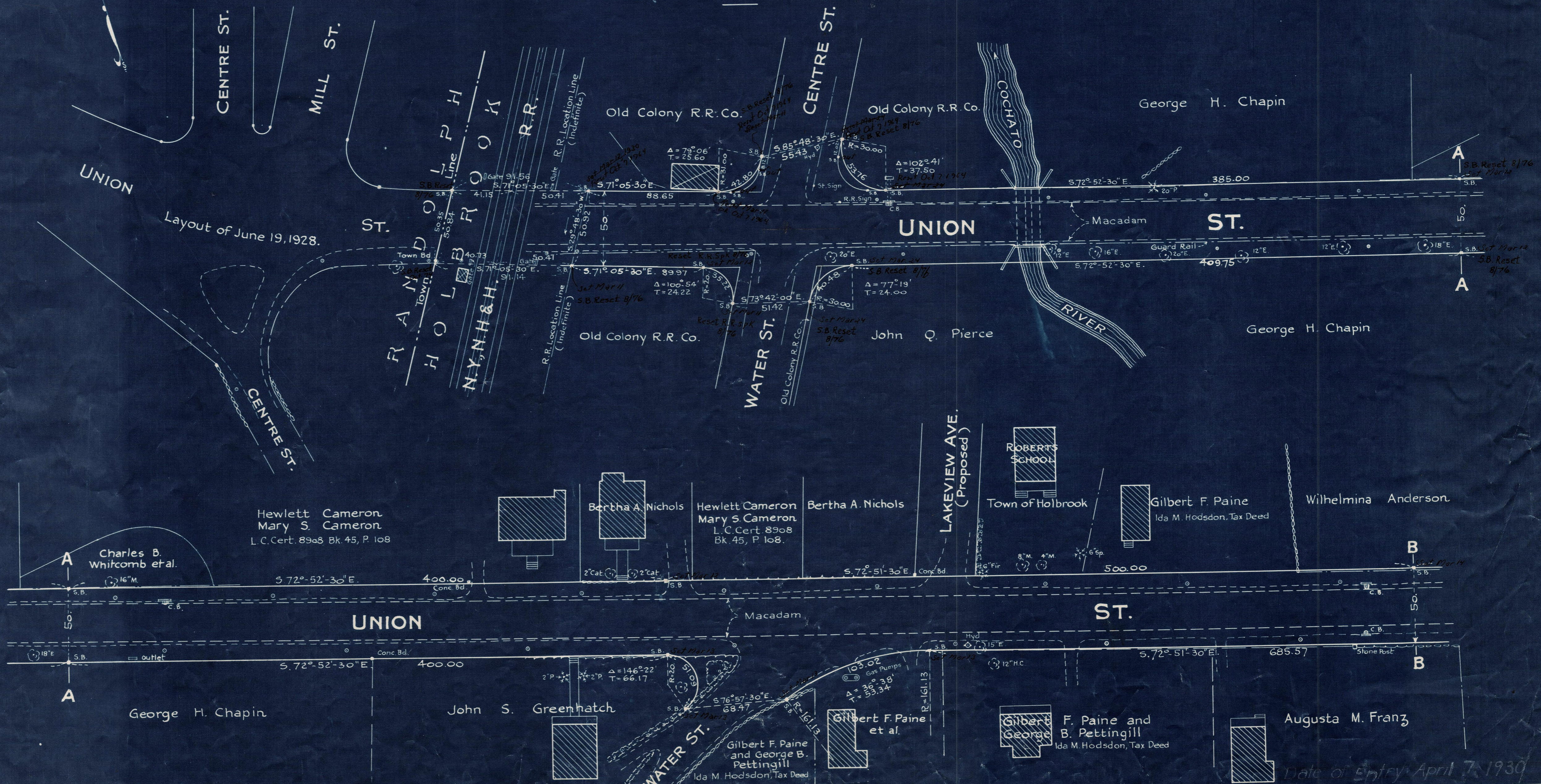
Plan showing the Relocation and Widening of UNION STREET, HOLBROOK, between

The Randolph Town Line and Franklin St. as made by the Norfolk County Commissioners by Return dated Nov. 12, 1929.

Hartley L. White, County Engineer. Scale 1 inch = 40 feet.

Edward W. Hunt Chairman.

A TRUE COPY
Attest *R. B. Worthington*, Clerk.



Note. Poles indicated thus: o

Date of Entry April 7, 1930