

Plan showing the Relocation and Widening
of

MAPLE ST., MEDWAY

from
Winthrop St. to Lovering St.

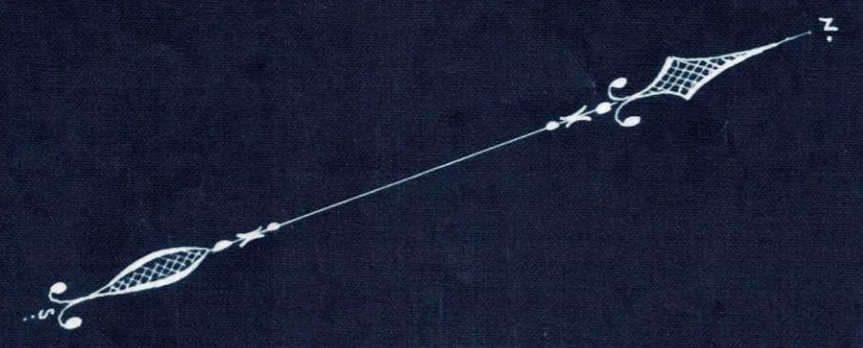
as made by the Norfolk County Commissioners
by Return dated July 9, 1929.

Hartley L. White, County Engineer. Scale 1 inch = 40 feet

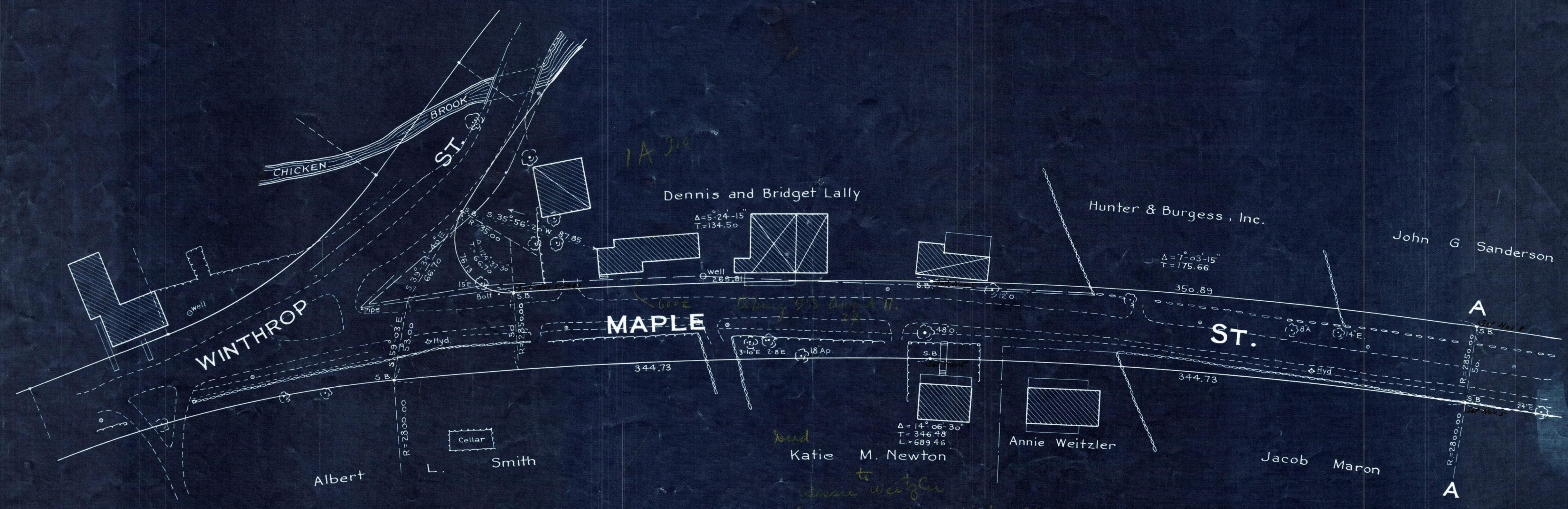
Edward W. Hunt Chairman

A TRUE COPY

Attest *R. B. Worthington* Clerk



*Recorded 1856/166
July 22, 1929*



1A 310

*Deed to Weitzler
July 23, 1929 Recorded July 24, 1929
Book 1856/406
Warranty deed*

Note: Poles indicated thus:

Date of Entry July 29, 1929