

Plan showing the Relocation
of
CANTON STREET, RANDOLPH
from
the Canton Town Line to a point about $\frac{2}{5}$ mile easterly,
as made by the Norfolk County Commissioners
by Return dated February 5, 1929.
Hartley L. White, County Engineer. Scale 1 inch = 40 feet.
Edward W. Hunt Chairman.

- A TRUE COPY -
Attest: *R.B. Woodington* Clerk.

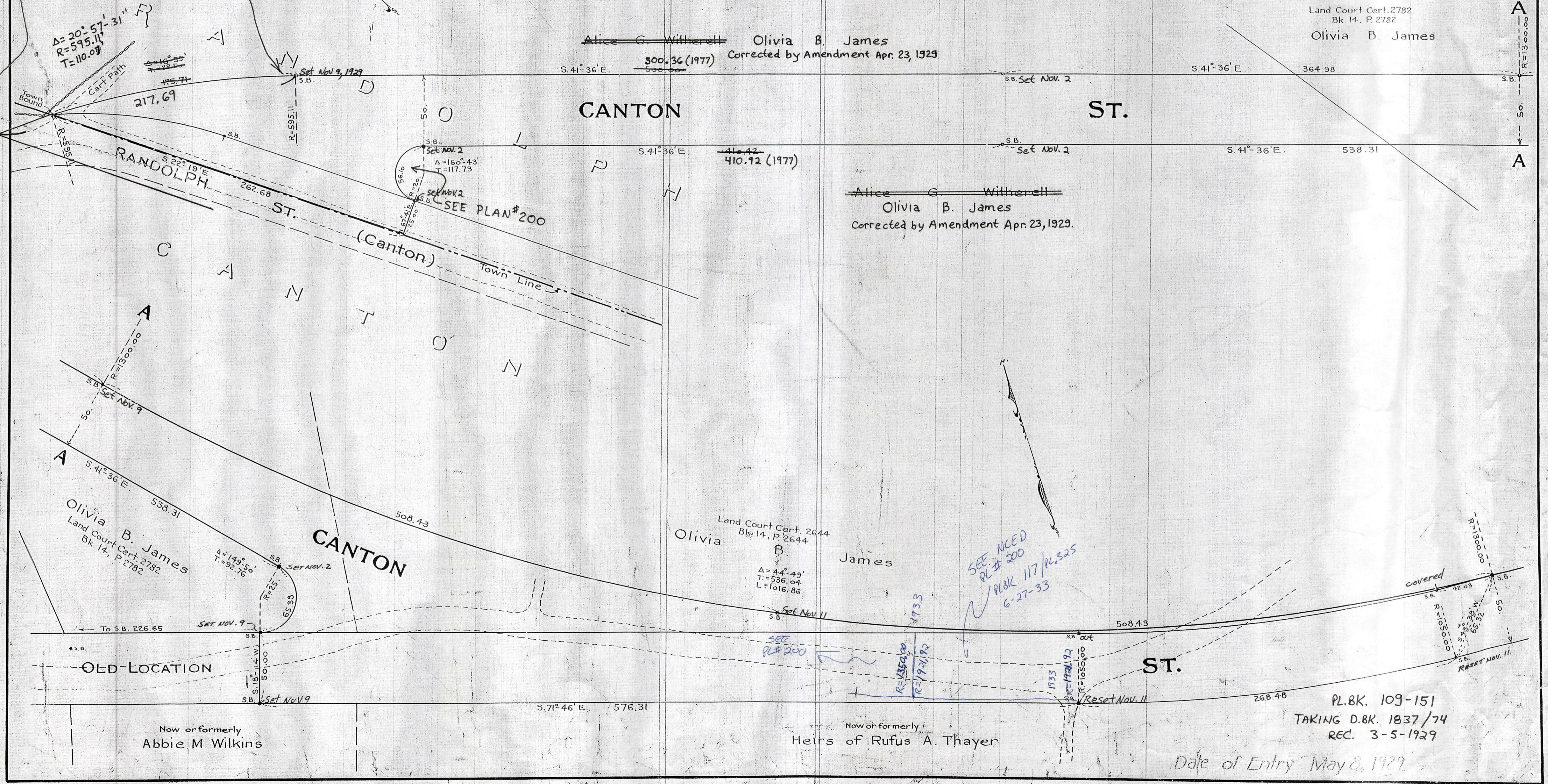
Land Court Cert. 2782
Bk 14, P. 2782
Olivia B. James

~~Alice G. Witherell~~ Olivia B. James
500.36 (1977) Corrected by Amendment Apr. 23, 1929

CANTON

ST.

FOR 1977 DETERMINATION OF
TOWN LINE SEE CALC. BOOKS +
ENN. #702 SEE ALSO PLANS
200 + 364-8



~~Alice G. Witherell~~
Olivia B. James
Corrected by Amendment Apr. 23, 1929.

Olivia B. James
Land Court Cert. 2644
Bk 14, P. 2644
James
A = 44° 49'
T = 536.04
L = 1016.86

Olivia B. James
Land Court Cert. 2782
Bk 14, P. 2782

Now or formerly
Abbie M. Wilkins

Now or formerly
Heirs of Rufus A. Thayer

PL.BK. 109-151
TAKING D.BK. 1837/74
REC. 3-5-1929

Date of Entry May 8, 1929

* SEE P.B. 539/52 & 53 *
FOR CHANGES