

Plan showing the Relocation and Widening of **SOUTH ST., FOXBOROUGH,** between **The Mansfield Town Line and School St.,** as made by the Norfolk County Commissioners by Return dated Dec. 26, 1928.

*A TRUE COPY.*  
Attest *R.B. Worthington* Clerk.

Hartley L. White, County Engineer. Scale 1 inch = 40 feet.

*Edward W. Hunt* Chairman.

Heirs of Herbert E. Sherman  
John L. Sherman, Admr.

Heirs of Herbert E. Sherman  
John L. Sherman, Admr.

Heirs of Herbert E. Sherman  
John L. Sherman, Admr.

Heirs of Herbert E. Sherman  
John L. Sherman, Admr.

Gretchen G. Horne

Horne

Jennie M. Garland

Gretchen

GREEN ST.

CEDAR ST.

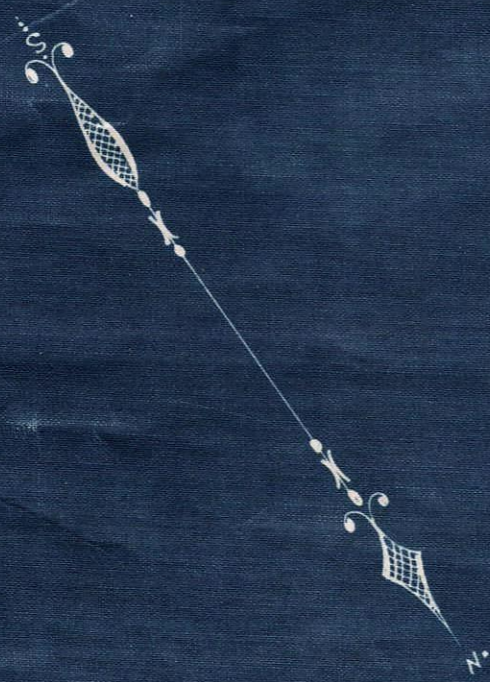
SOUTH

SOUTH

ST.

MANSFIELD  
BOROUGH  
Town Line

OLD ROAD



Note - Poles indicated thus:

*Copy Book 15*

*Date of Plan January 27, 1962*