

Plan showing the Relocation and Widening
of
HANCOCK ST., BRAINTREE.
between
Plain St. and Thayer Ave.

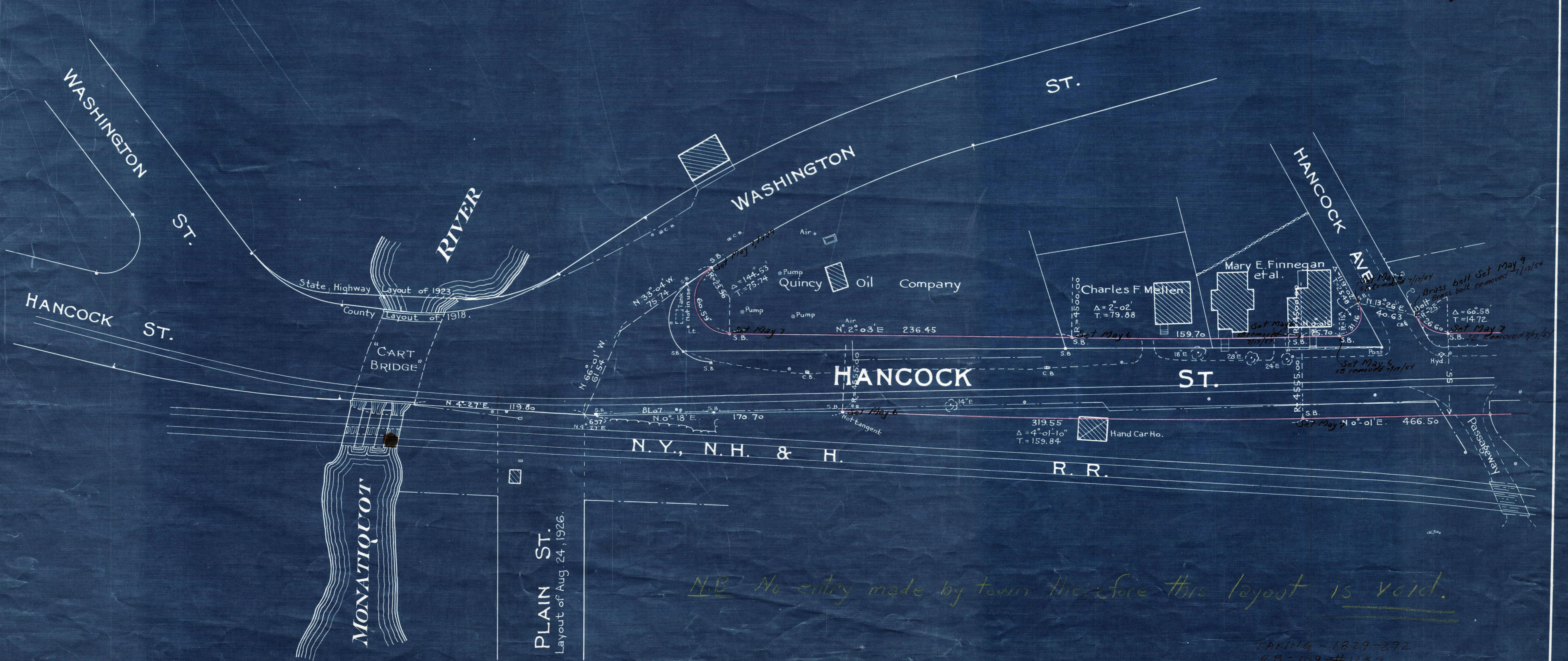
as made by the Norfolk County Commissioners
by Return dated Dec. 18, 1928.

Hartley L. White, County Engineer. Scale 1 inch = 40 feet.

Edward W. Hunt Chairman.

— A TRUE COPY —

Attest *R.B. Worthington* Clerk.



Note: Poles indicated thus: ●

TAKING - 1829-872
P.B. 109 - #1233
Rec. - Dec. 28, 1928