

Plan showing the Relocation and Widening
of
SUMMER ST., WALPOLE.
between
Winter St. and Neponset St.

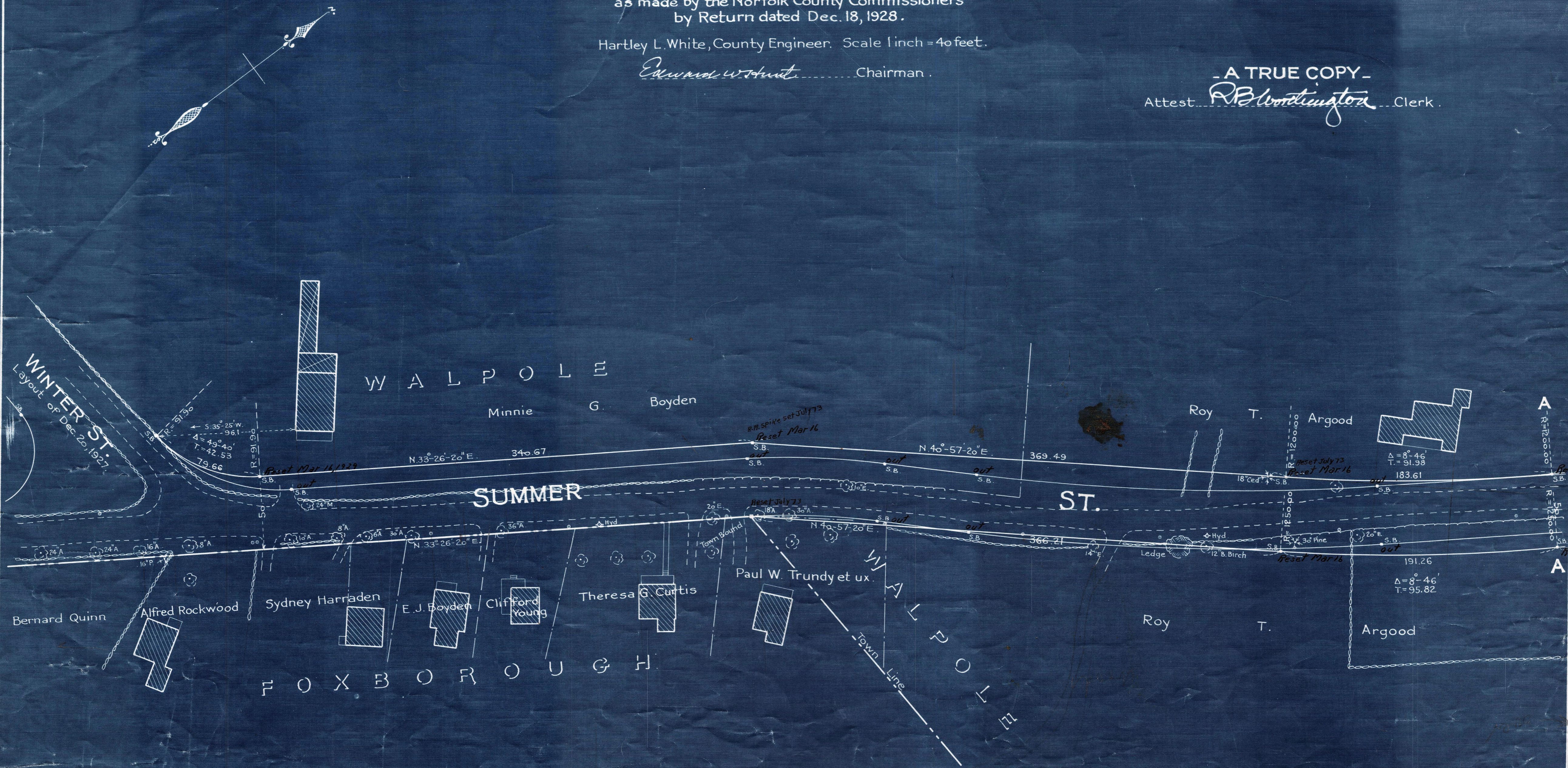
as made by the Norfolk County Commissioners
by Return dated Dec. 18, 1928.

Hartley L. White, County Engineer. Scale 1 inch = 40 feet.

Edward W. Hunt Chairman.

A TRUE COPY

Attest *R. B. Woodington* Clerk.



Note: Poles indicated thus: ○

Date of Entry Jan 10, 1929