

Note. Name of this Way changed to Massapoag Ave.  
by vote of the Town Mar. 10, 1930.

# Plan showing the Relocation and Widening of EASTON AND MANSFIELD STS., SHARON

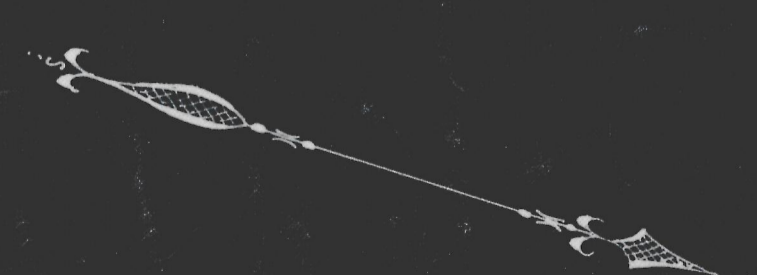
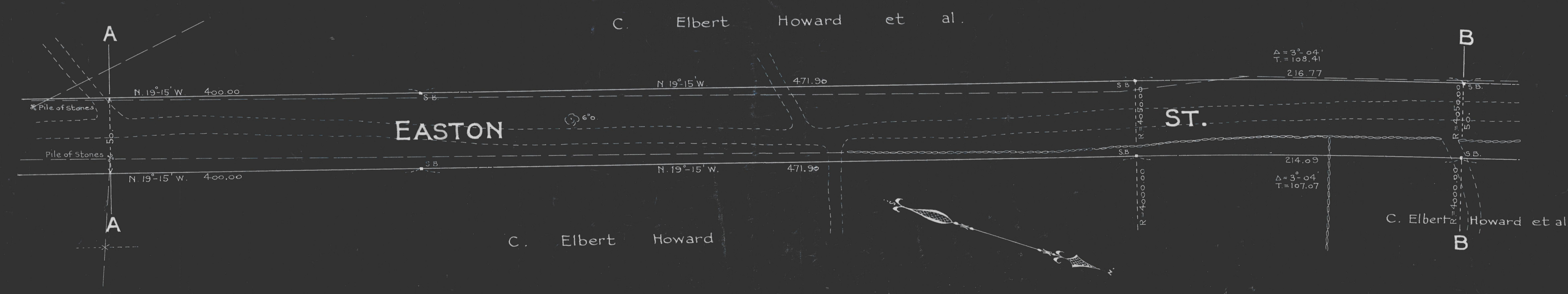
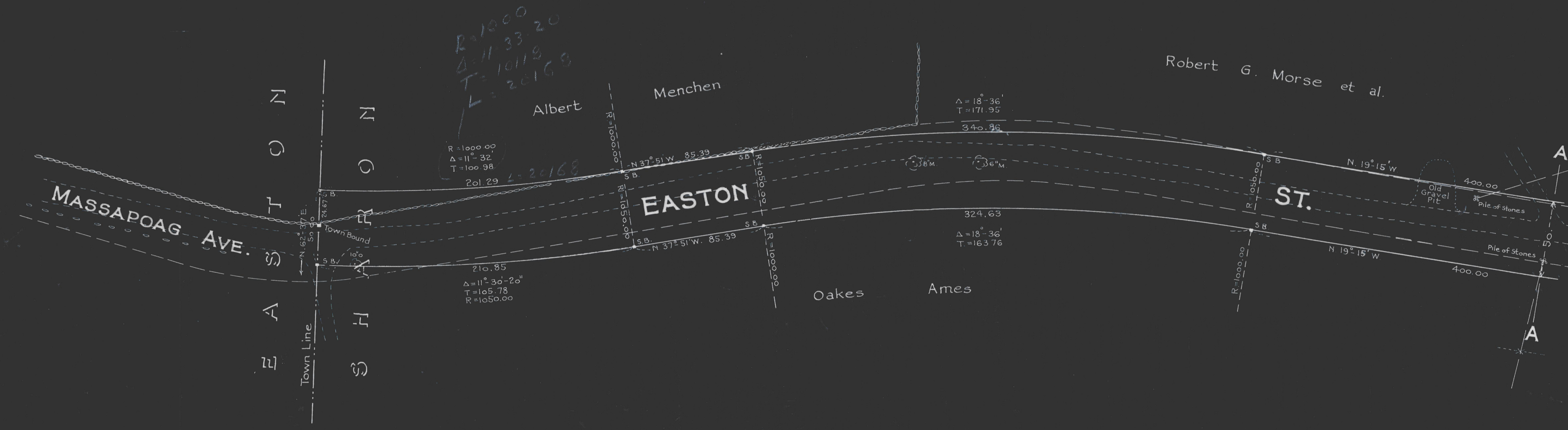
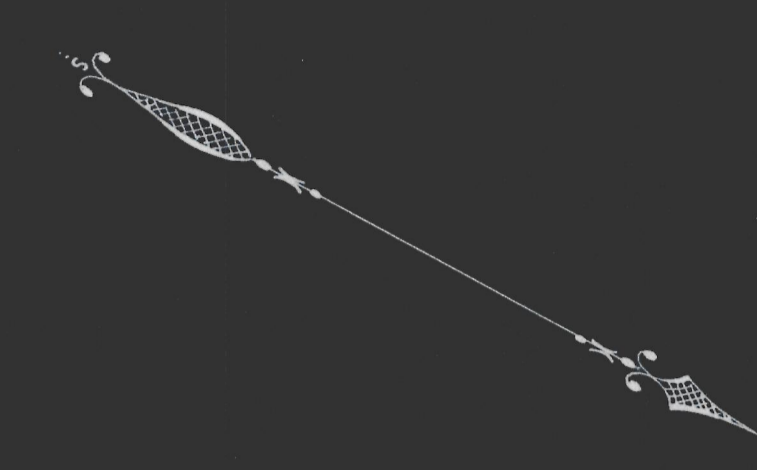
between the Easton Town Line and Morse St.  
as made by the Norfolk County Commissioners  
by Return dated July 31, 1928.

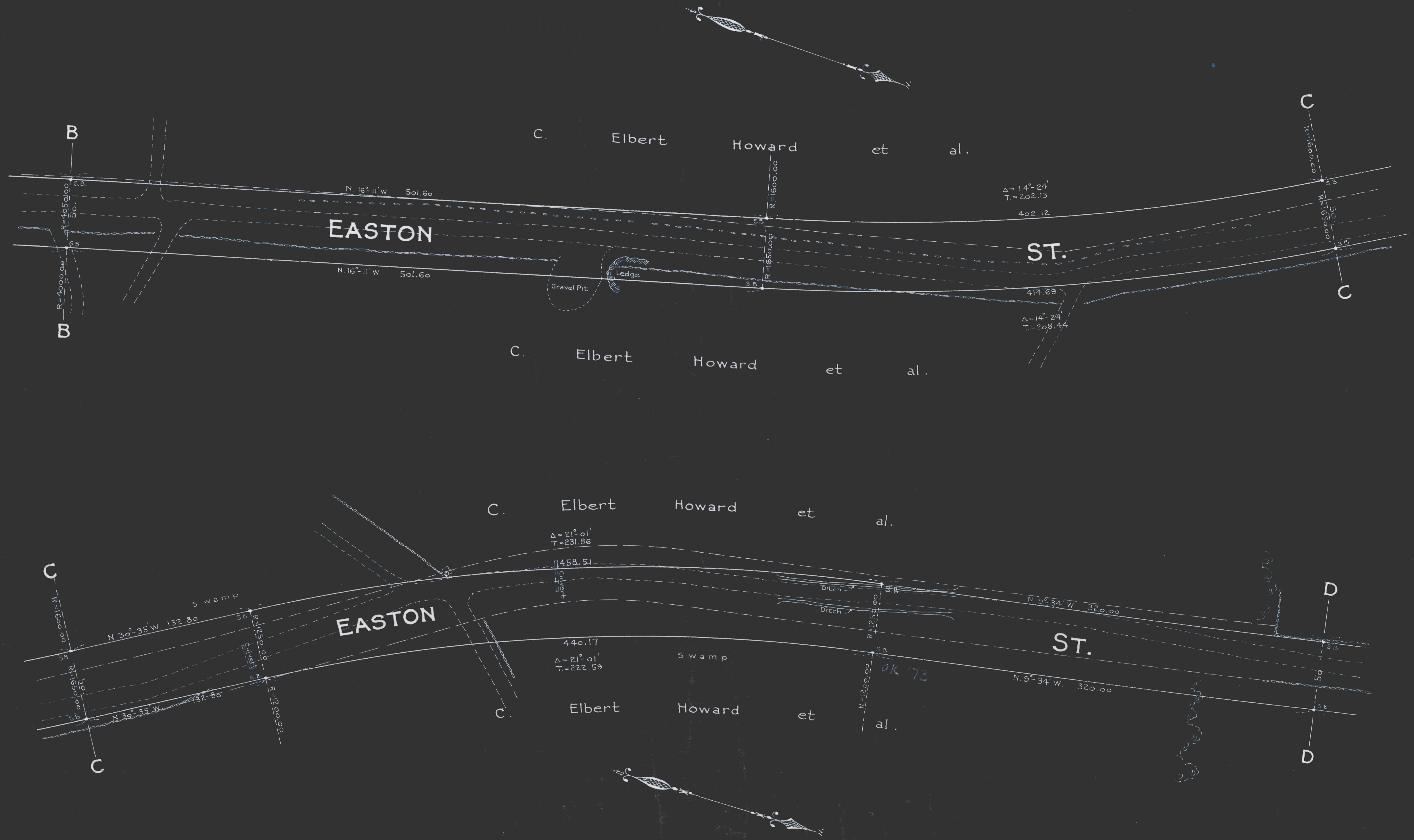
Hartley L. White, County Engineer. Scale 1 inch = 40 feet.

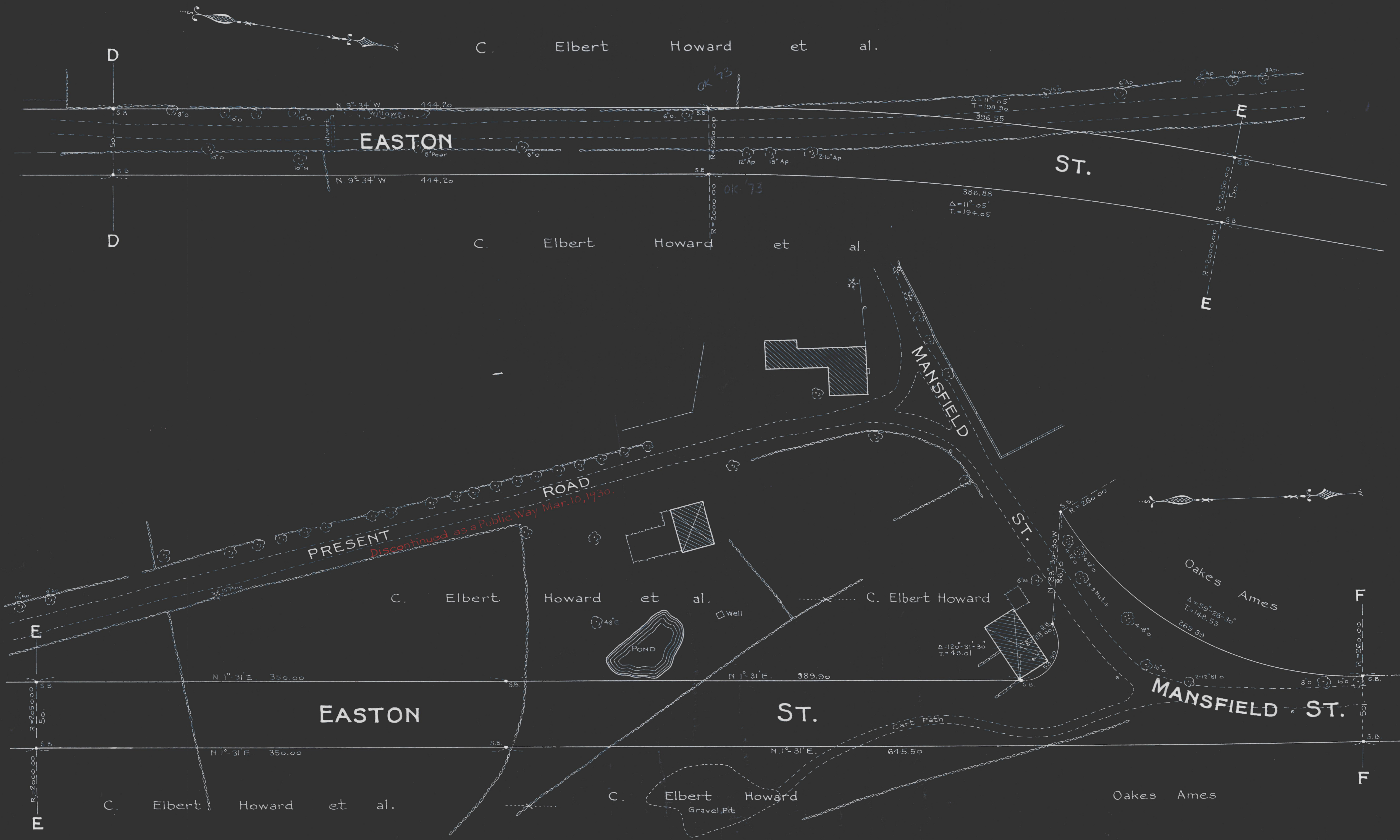
*Edward W. Hunt* Chairman.

- A TRUE COPY -

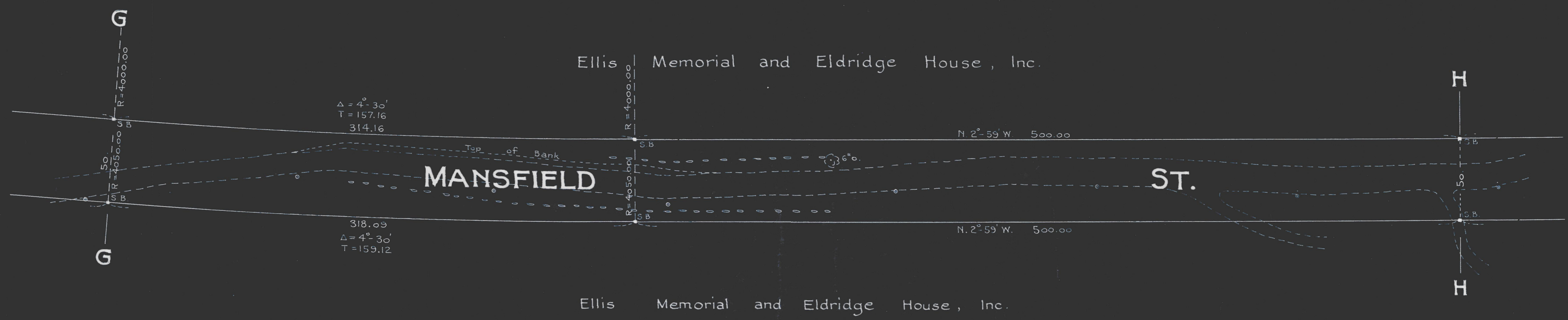
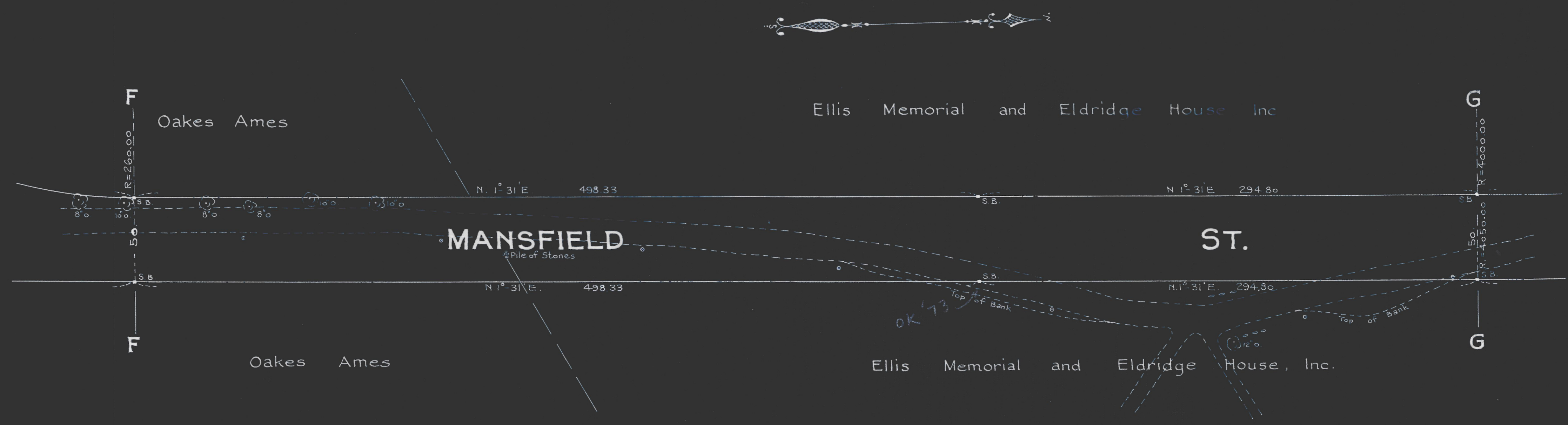
Attest *Willard Everett* Assistant Clerk.







Note: Poles indicated thus:  $\circ$



Note: Poles indicated thus:  $\circ$

