

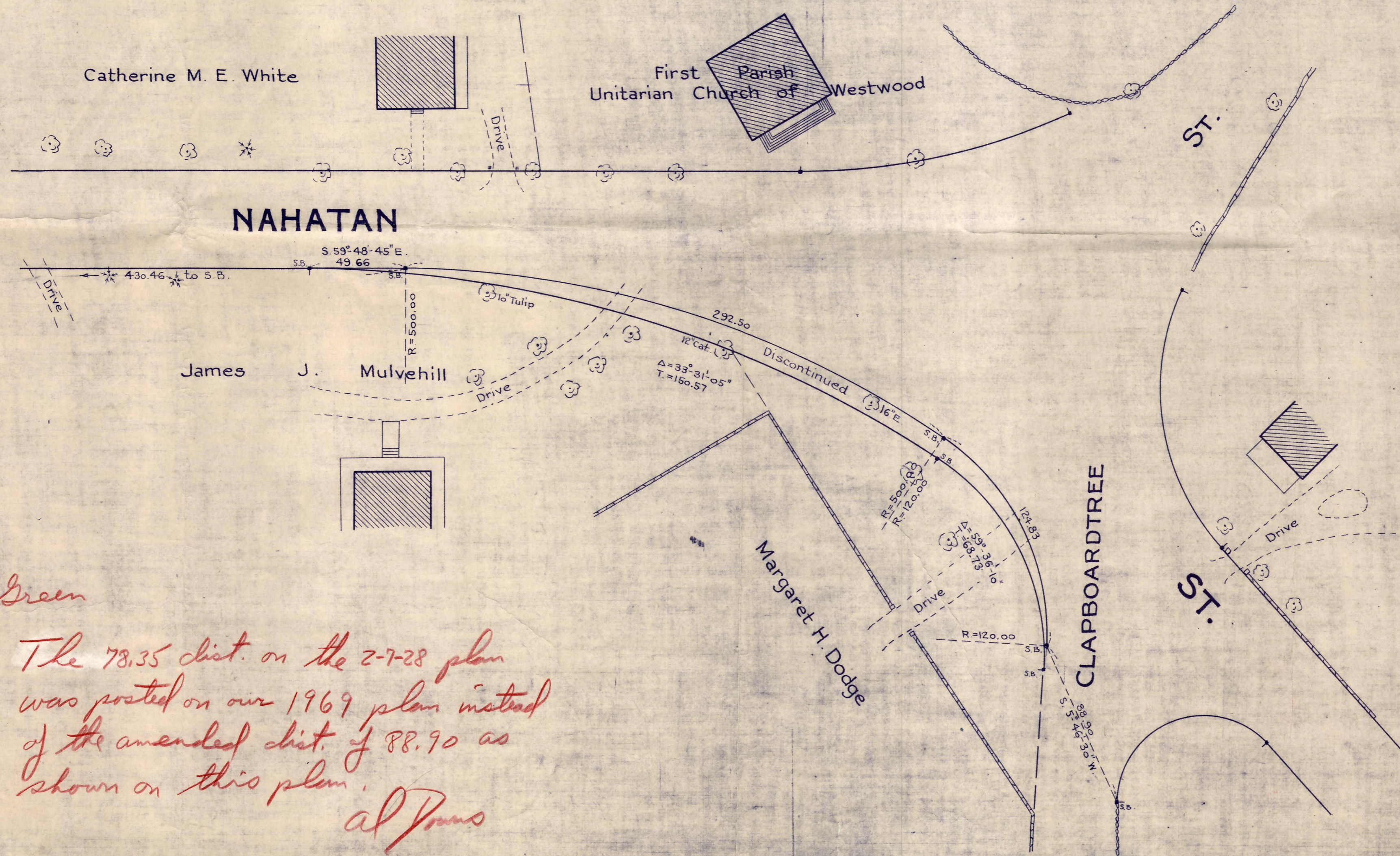
Plan showing the Line
of
NAHATAN ST., WESTWOOD
near Clapboardtree St.
as altered by the Norfolk County Commissioners
by Amendment made July 24, 1928 to the Return of Feb. 7, 1928.

Hartley L. White, County Engineer. Scale 1 inch = 40 feet.

Edward W. Hunt Chairman.

A TRUE COPY

Attest *Willard Everett* Assistant Clerk.



Mr. Green

The 78.35 dist. on the 2-7-28 plan was posted on our 1969 plan instead of the amended dist. of 88.90 as shown on this plan.

al Jones

E. LIONEL PAVLO
ENGINEERING CO., INC.
BOSTON, MASS.
RECEIVED
AUG 22 1975

