

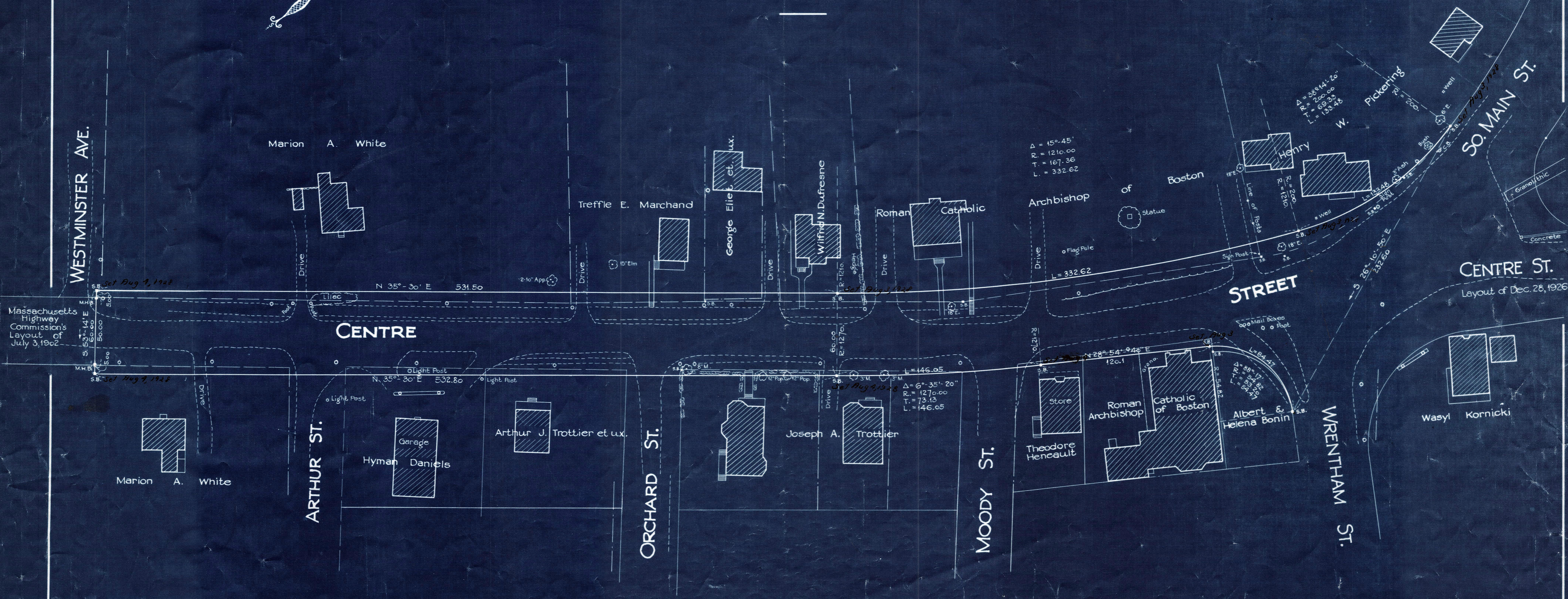
Plan showing the Relocation and Widening
of
CENTRE STREET, BELLINGHAM,
Between Westminster Ave. and South Main St.,
as made by the Norfolk County Commissioners
by Return dated June 19, 1928.

Hartley L. White, County Engineer. Scale 1 inch = 40 feet.

Edward White Chairman.

- A TRUE COPY -

Attest: *R.B. Worthington* Clerk.



Note: - Poles indicated thus: o