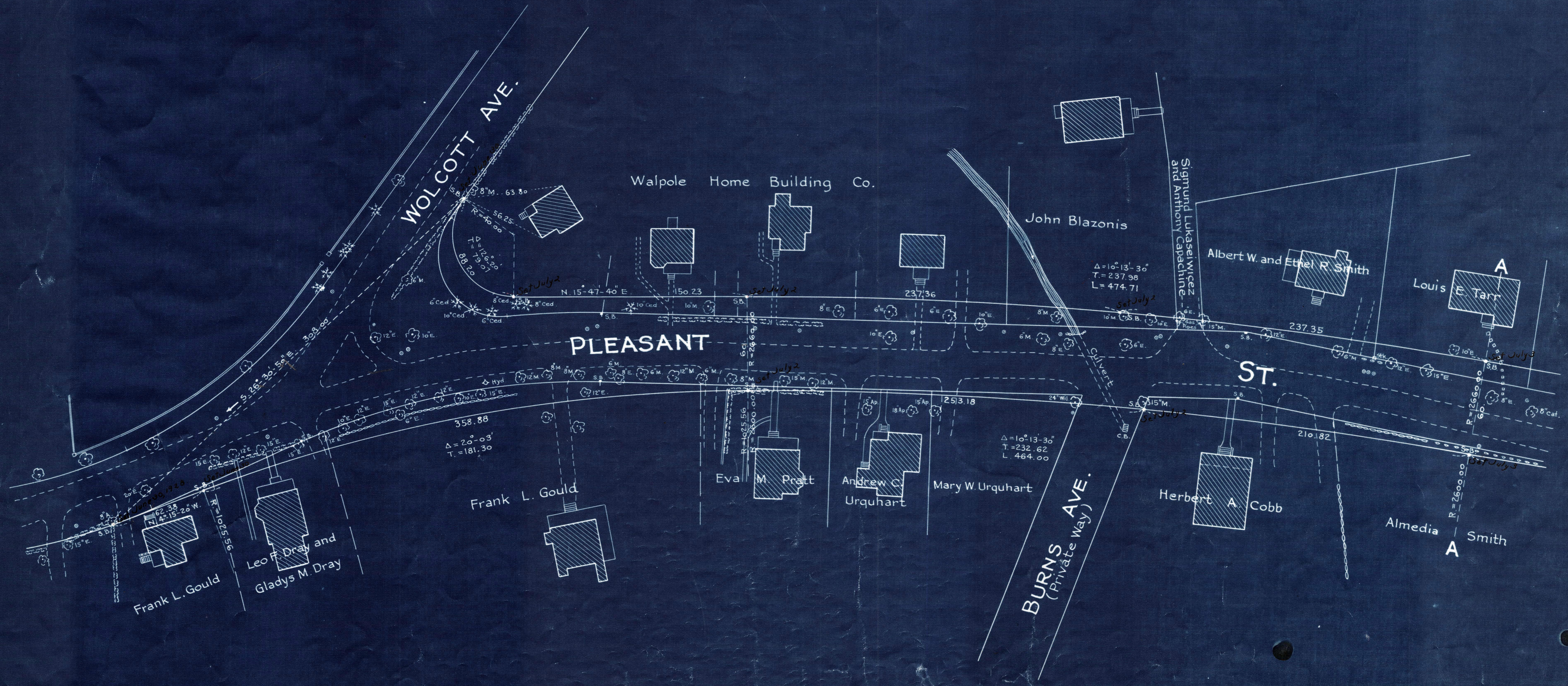


Plan showing the Relocation and Widening  
of  
**PLEASANT ST., WALPOLE**  
from  
Wolcott Ave. to the Norwood Town Line  
as made by the Norfolk County Commissioners  
by Return dated May 29, 1928.

Hartley L. White, County Engineer. Scale 1 inch = 40 feet.

*Frank Richardson* Chairman.

A TRUE COPY.  
Attest *R. B. Worthington* Clerk.



Note - Poles indicated thus:  $\circ$

Date of Entry June 29, 1928.