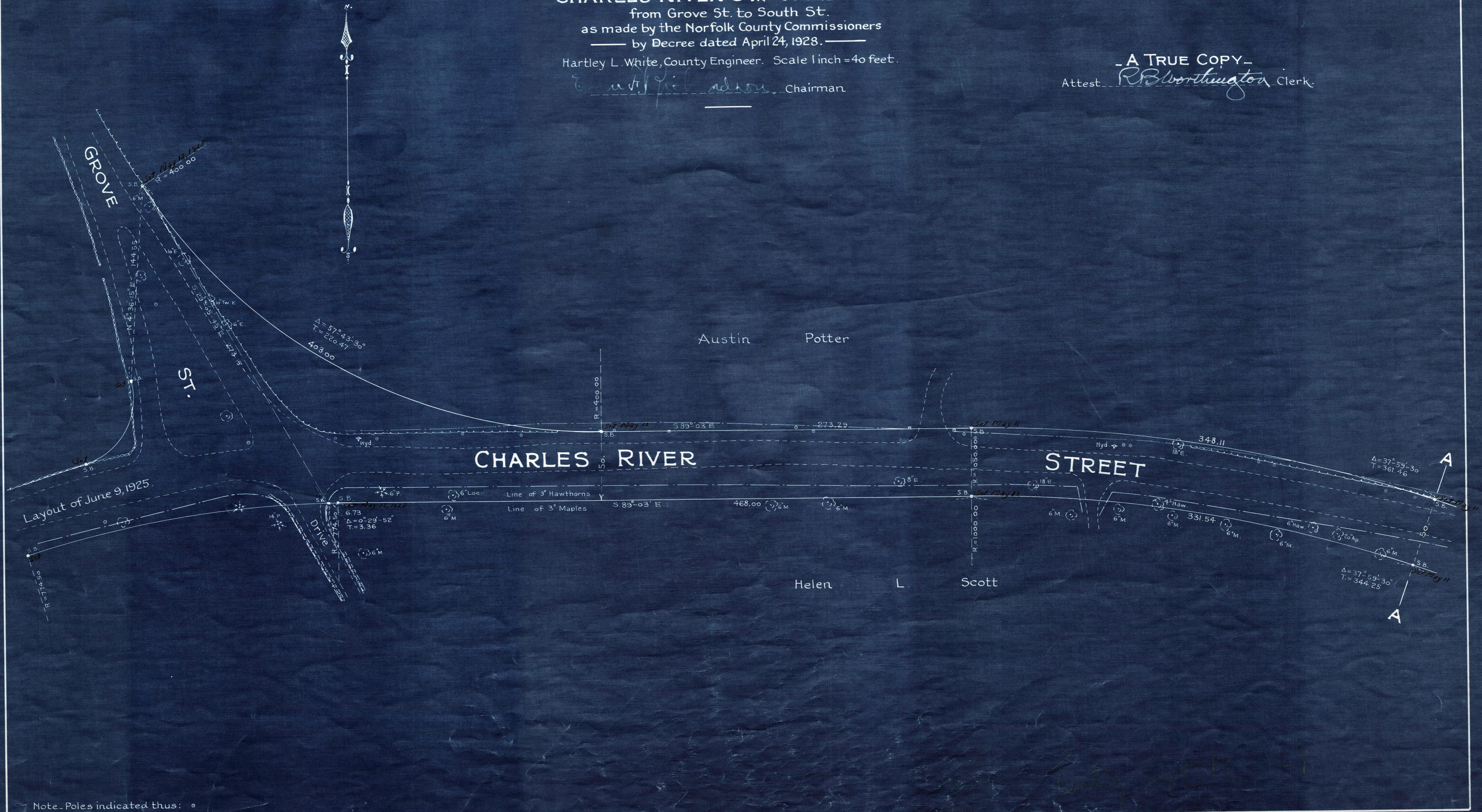


Plan showing the Relocation and widening
of
CHARLES RIVER ST., NEEDHAM
from Grove St. to South St.
as made by the Norfolk County Commissioners
by Decree dated April 24, 1928.

Hartley L. White, County Engineer. Scale 1 inch = 40 feet.

H. L. White Chairman

A TRUE COPY
Attest *R. B. Worthington* Clerk.



Note. Poles indicated thus: ○

Entry Sept 17 1929

Date of Entry Sept. 17, 1929.