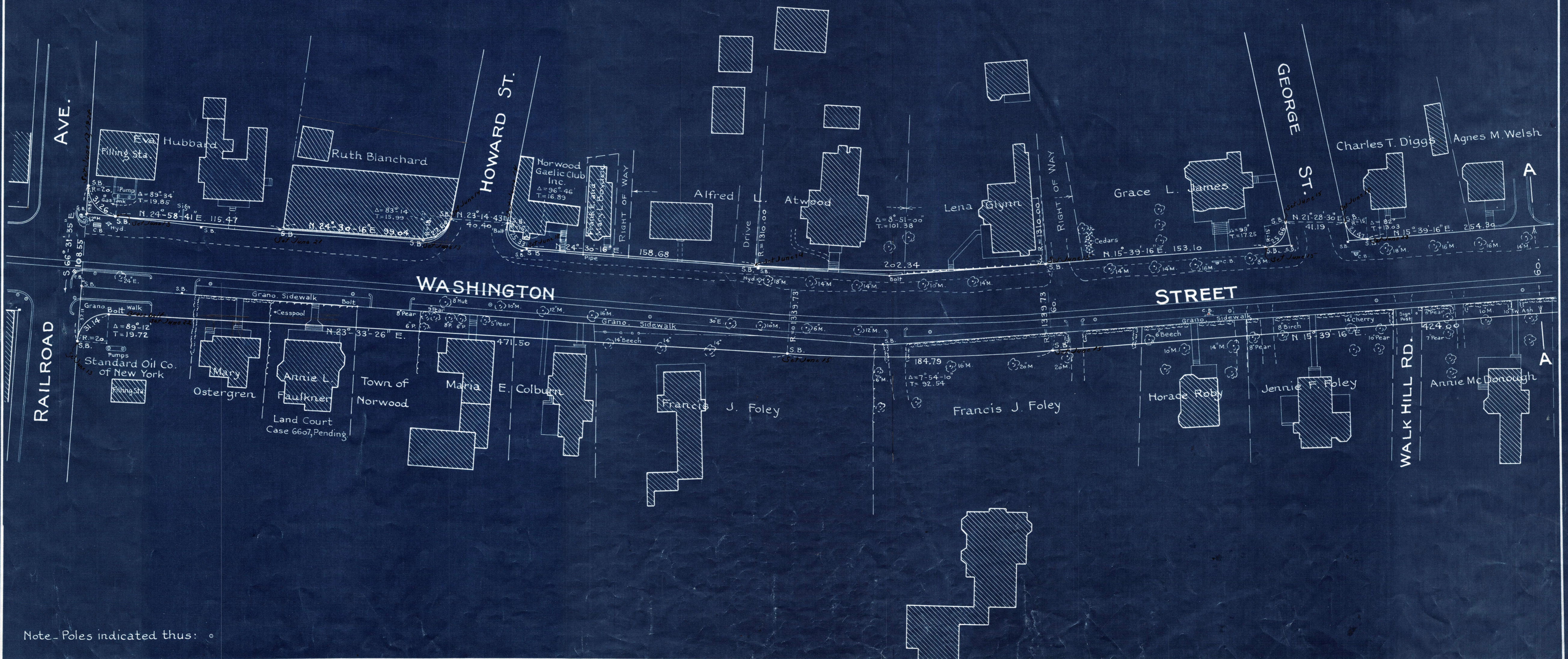


Plan showing the Relocation and Widening
of
WASHINGTON ST., NORWOOD
from Railroad Ave. to Prospect St.
as made by the Norfolk County Commissioners
by Decree dated May 1, 1928

Hartley L. White, County Engineer. Scale 1 inch = 40 feet.
Crawford Richardson Chairman.

A TRUE COPY
Attest *R.B. Worthington* Clerk.



Note - Poles indicated thus: \odot

Date of Entry May 22, 1928