

Plan showing the Relocation and Widening of NAHATAN ST., WESTWOOD

from High St. to the Norwood Town Line as made by the Norfolk County Commissioners by Decree dated Feb. 7, 1928.

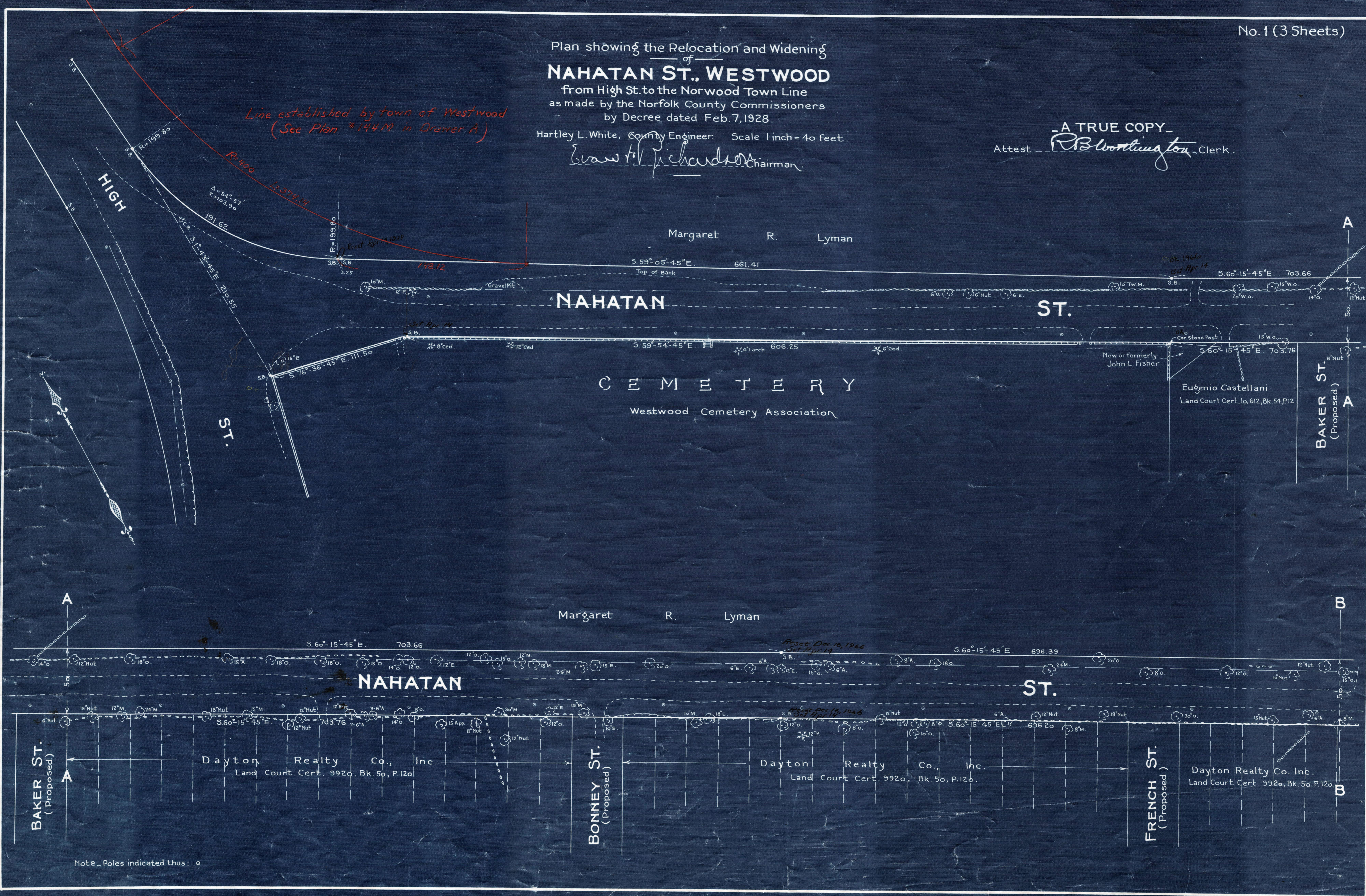
Hartley L. White, County Engineer. Scale 1 inch = 40 feet.

Erwin H. Richardson, Chairman.

A TRUE COPY.

Attest *R. B. Worthington*, Clerk.

Line established by town of Westwood (See Plan # 14410 in Drawer A)



Note - Poles indicated thus: o

Date of Entry March 1928