

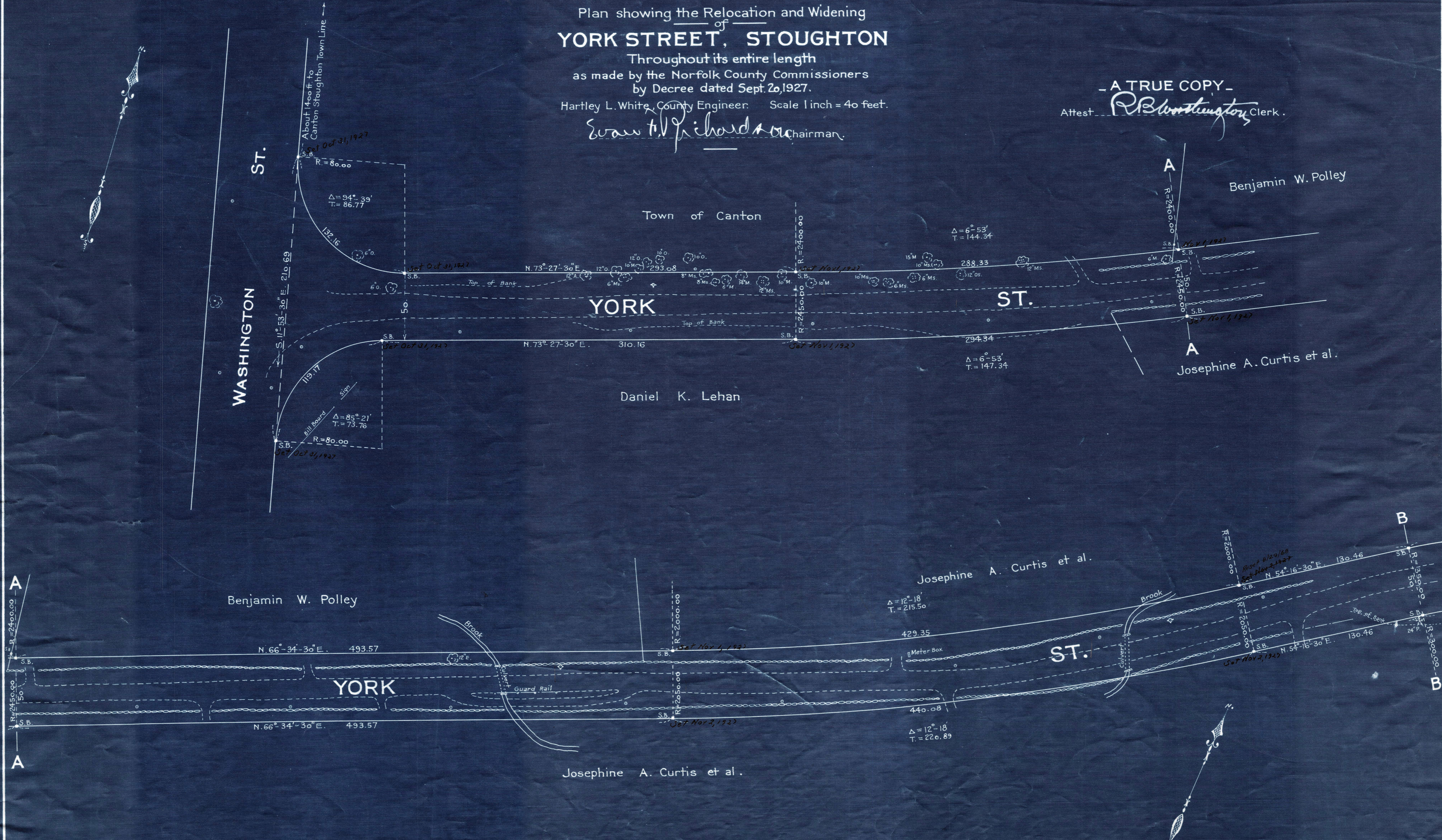
Plan showing the Relocation and Widening of YORK STREET, STOUGHTON

Throughout its entire length
as made by the Norfolk County Commissioners
by Decree dated Sept. 20, 1927.

Hartley L. White, County Engineer. Scale 1 inch = 40 feet.

Swan H. Richardson Chairman.

- A TRUE COPY -
Attest *R. B. Worthington* Clerk.



Note: Poles indicated thus: \circ
Hydrants " " \diamond

Date of Entry: Mar 17, 1928