

Plan showing the Relocation and Widening of **MECHANIC ST., FOXBOROUGH** from

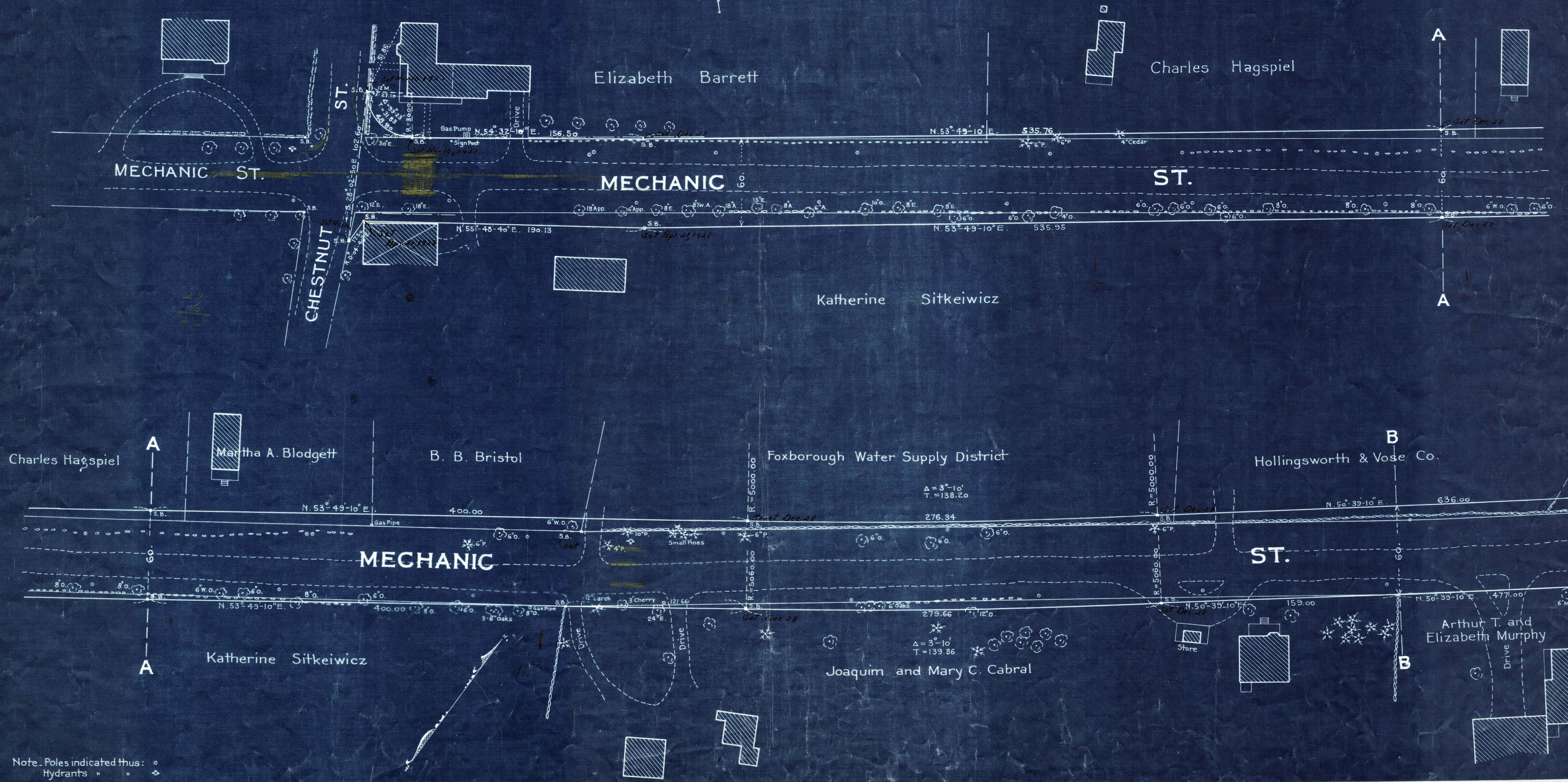
Chestnut St to the Sharon Town Line
as made by the Norfolk County Commissioners
by Decree dated Aug. 9, 1927

Hartley L. White, County Engineer. Scale 1 inch = 40 feet.

Ernest Richardson Chairman.

- A TRUE COPY -

Attest *Willard Everett* Assistant Clerk.



Note: Poles indicated thus: ○
Hydrants " " ◇