

Plan showing the Relocation and Widening of WASHINGTON ST., DEDHAM

Between the Boston-Dedham Line and a point
about 400 ft. North of Williams St.

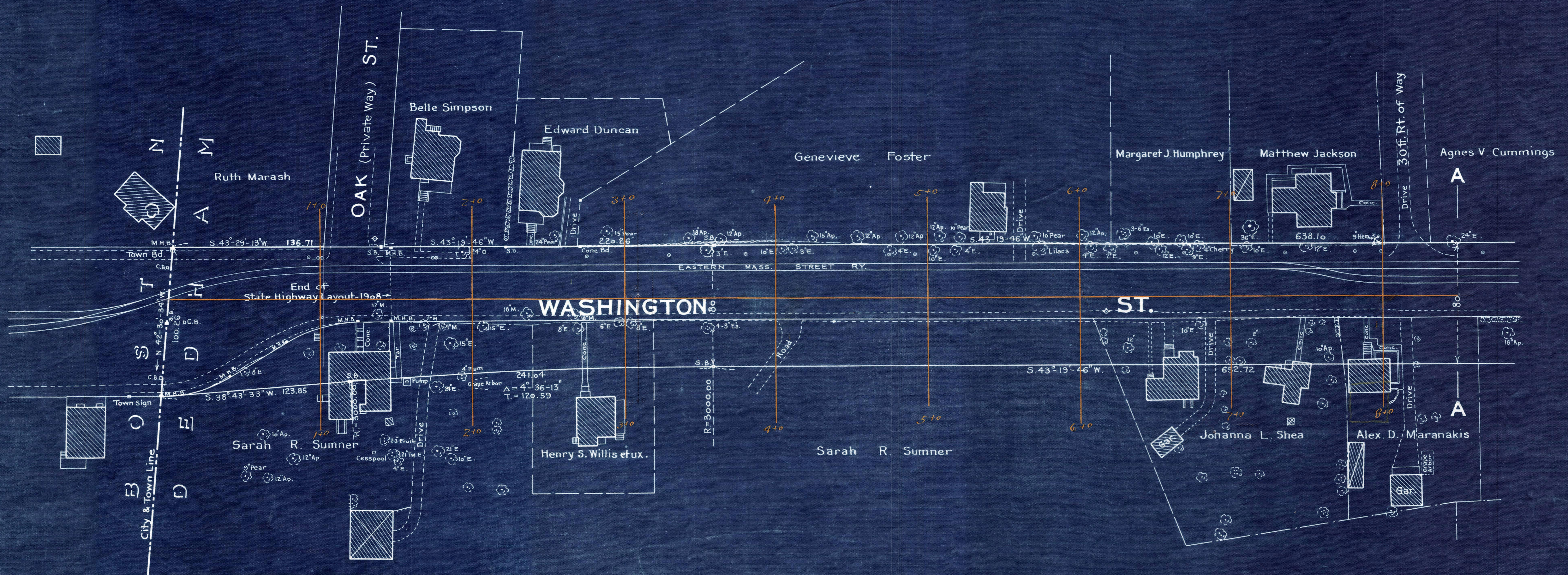
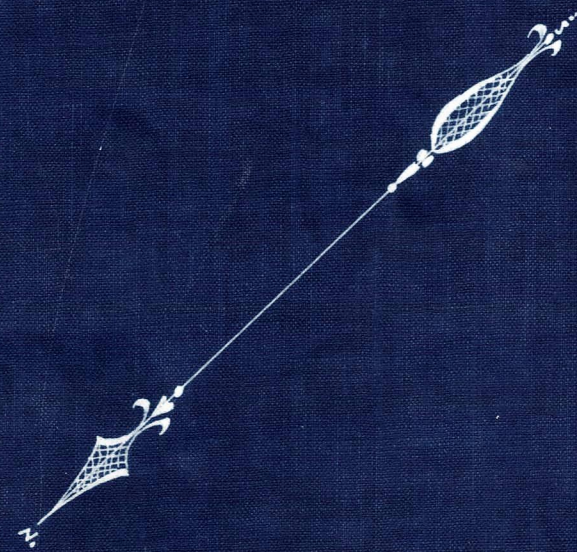
as made by the Norfolk County Commissioners
by decree dated April 26, 1927.

Hartley L. White, County Engineer. Scale 1 inch = 40 feet.

Ernest H. Richardson, Chairman.

- A TRUE COPY -

Attest: *R. B. Worthington*, Clerk.



Note - Poles indicated thus:
Hydrants " "

Date of Entry July 5, 1927