

Plan showing the Relocation and Widening  
of  
**CENTRE AND FRANKLIN STREETS,**  
— BELLINGHAM, —

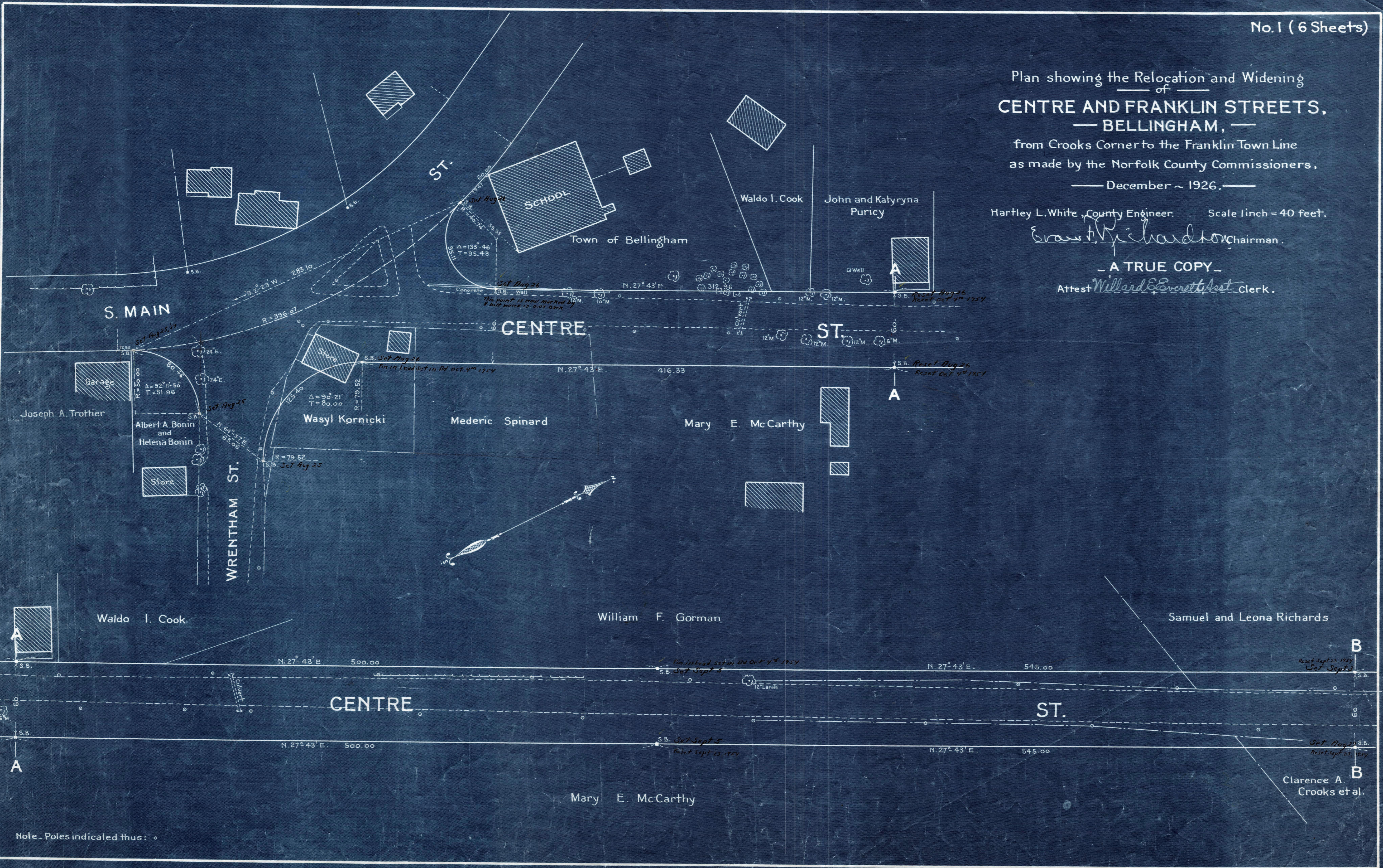
from Crooks Corner to the Franklin Town Line  
as made by the Norfolk County Commissioners,  
— December ~ 1926, —

Hartley L. White, County Engineer. Scale 1 inch = 40 feet.

*Ernest Richardson* Chairman.

— A TRUE COPY —

Attest *Willard Everett* Asst. Clerk.



Note - Poles indicated thus: °