

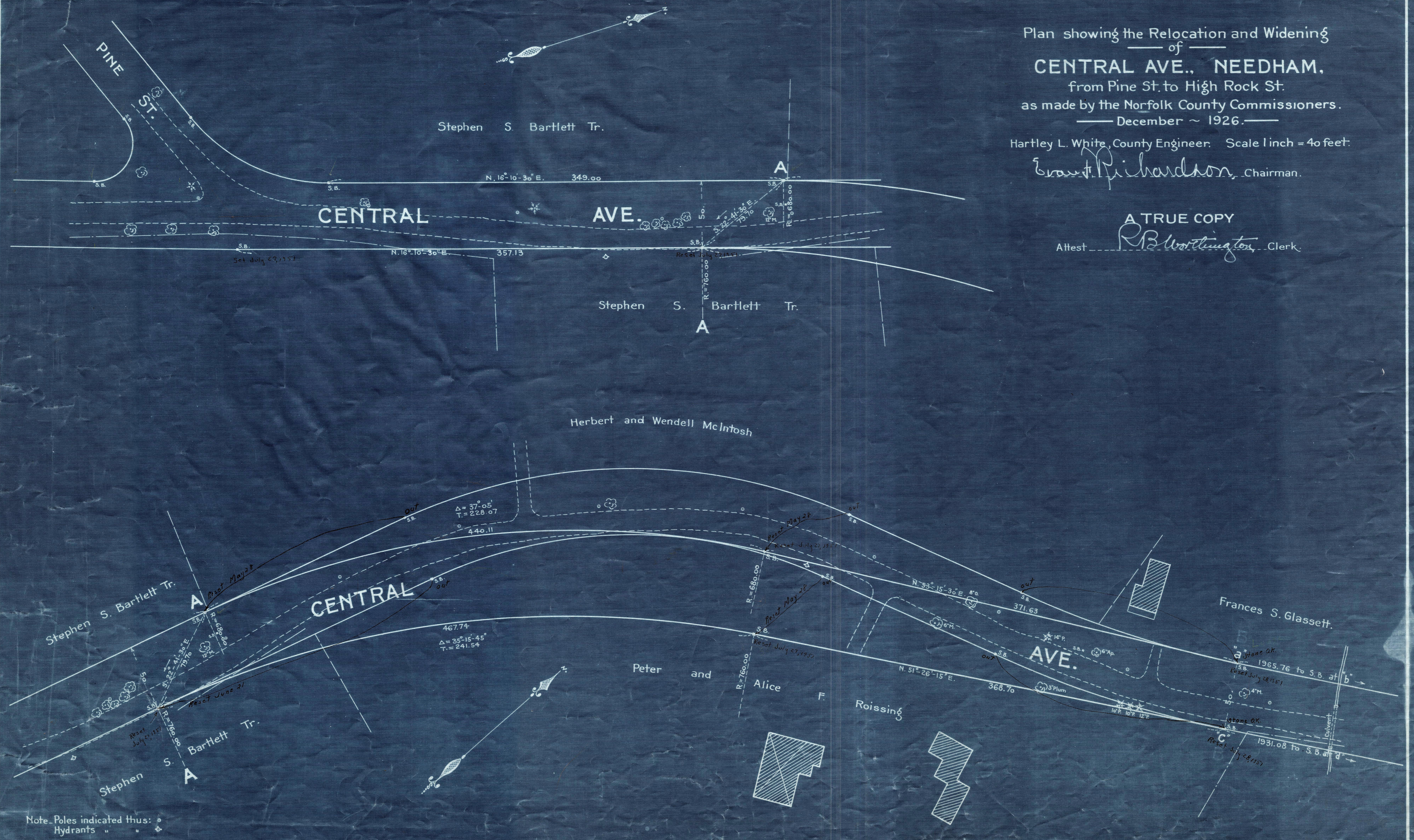
Plan showing the Relocation and Widening
 of
CENTRAL AVE., NEEDHAM,
 from Pine St. to High Rock St.
 as made by the Norfolk County Commissioners.
 December ~ 1926.

Hartley L. White, County Engineer. Scale 1 inch = 40 feet.

Ernest Richardson, Chairman.

A TRUE COPY

Attest *RB Worthington*, Clerk.



Note: Poles indicated thus: \circ
 Hydrants " " \diamond

Date of Entry May 19, 1927