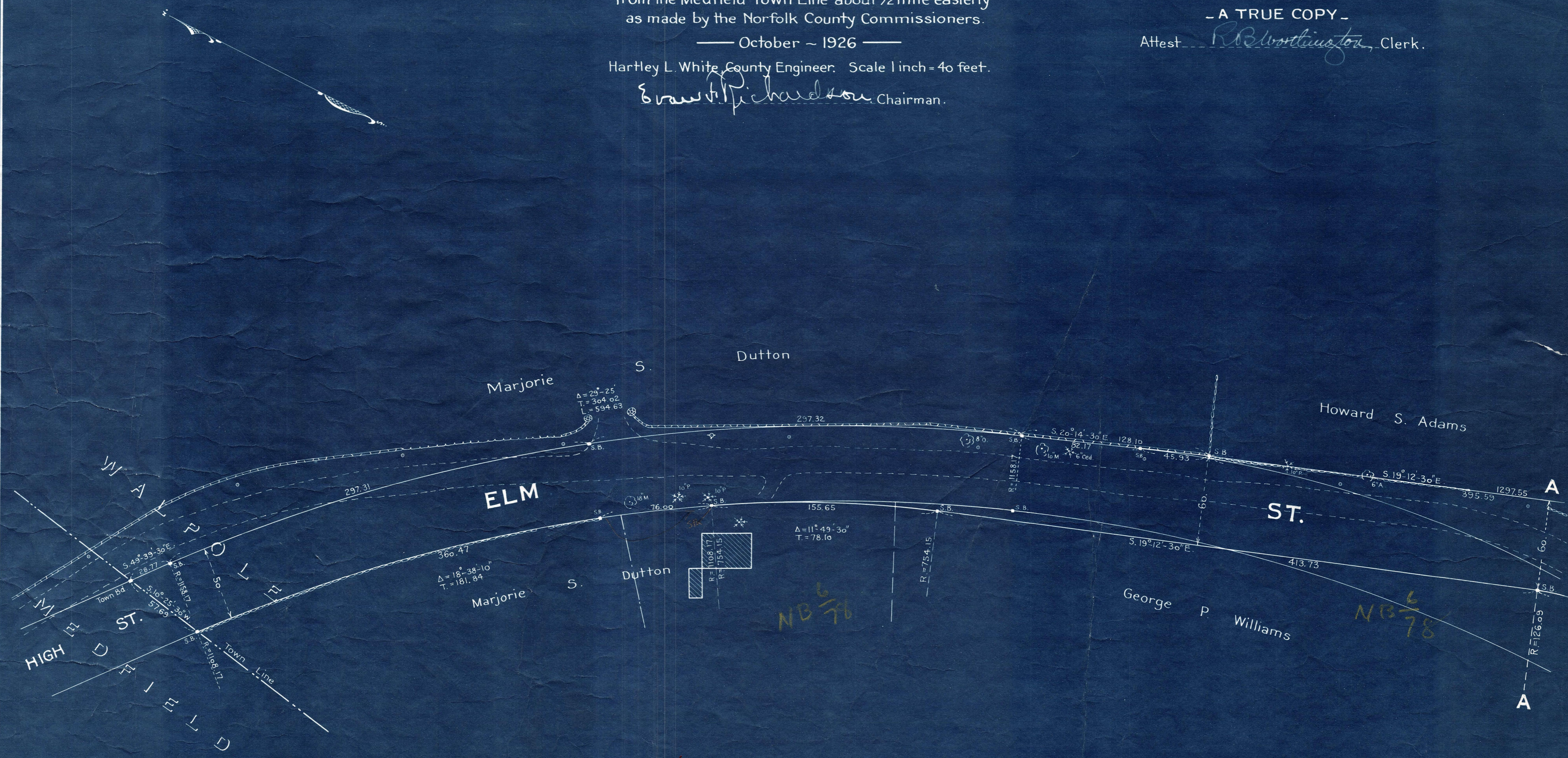


Plan showing the Relocation and Widening
of
ELM STREET, WALPOLE
from the Medfield Town Line about 1/2 mile easterly
as made by the Norfolk County Commissioners.
— October ~ 1926 —

Hartley L. White, County Engineer. Scale 1 inch = 40 feet.
Ernest Richardson, Chairman.

- A TRUE COPY -

Attest *R. B. Worthington*, Clerk.



Note. Poles indicated thus: \circ
Hydrants " " \diamond

OFFICE COPY