

Plan showing the Relocation and Widening
of
ELM STREET, WALPOLE
from the Medfield Town Line about 1/2 mile easterly
as made by the Norfolk County Commissioners.

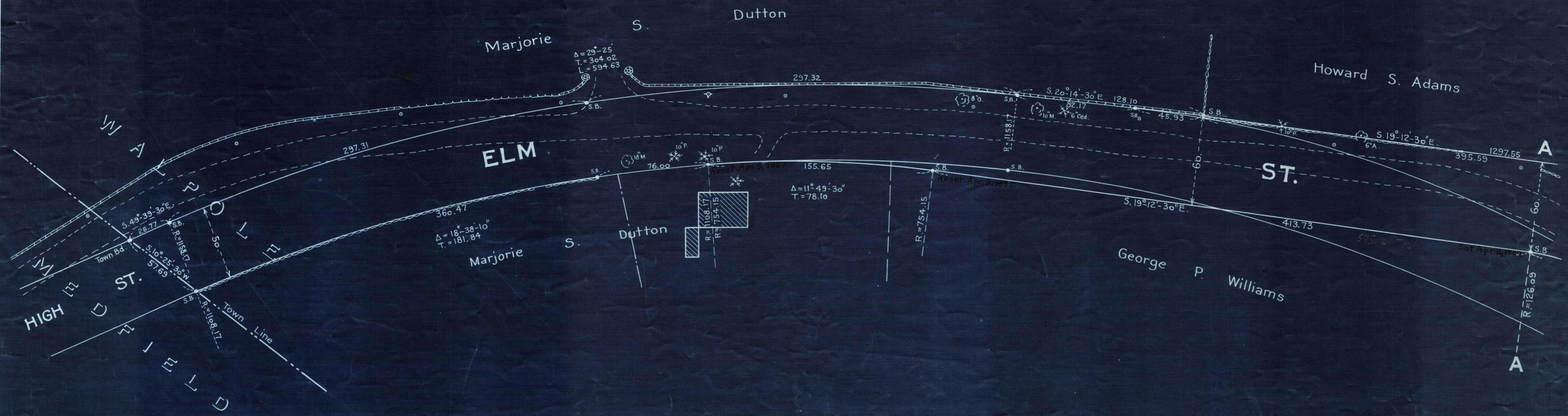
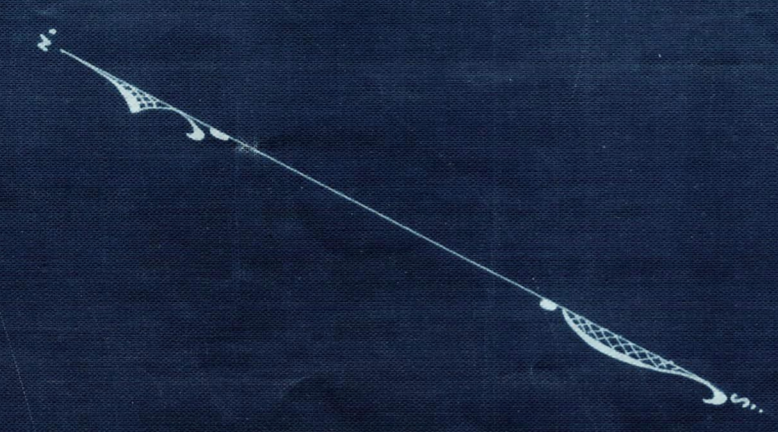
— October ~ 1926 —

Hartley L. White, County Engineer. Scale 1 inch = 40 feet.

Ernest Richardson Chairman.

- A TRUE COPY -

Attest *R.B. Worthington*, Clerk.



Note. Poles indicated thus: \circ
Hydrants " " \diamond

Date of Entry Oct 19, 1926