

Plan showing the Relocation and Widening
of
BLUE HILL STREET, CANTON
between Washington St. and the Milton Town Line
as made by the Norfolk County Commissioners

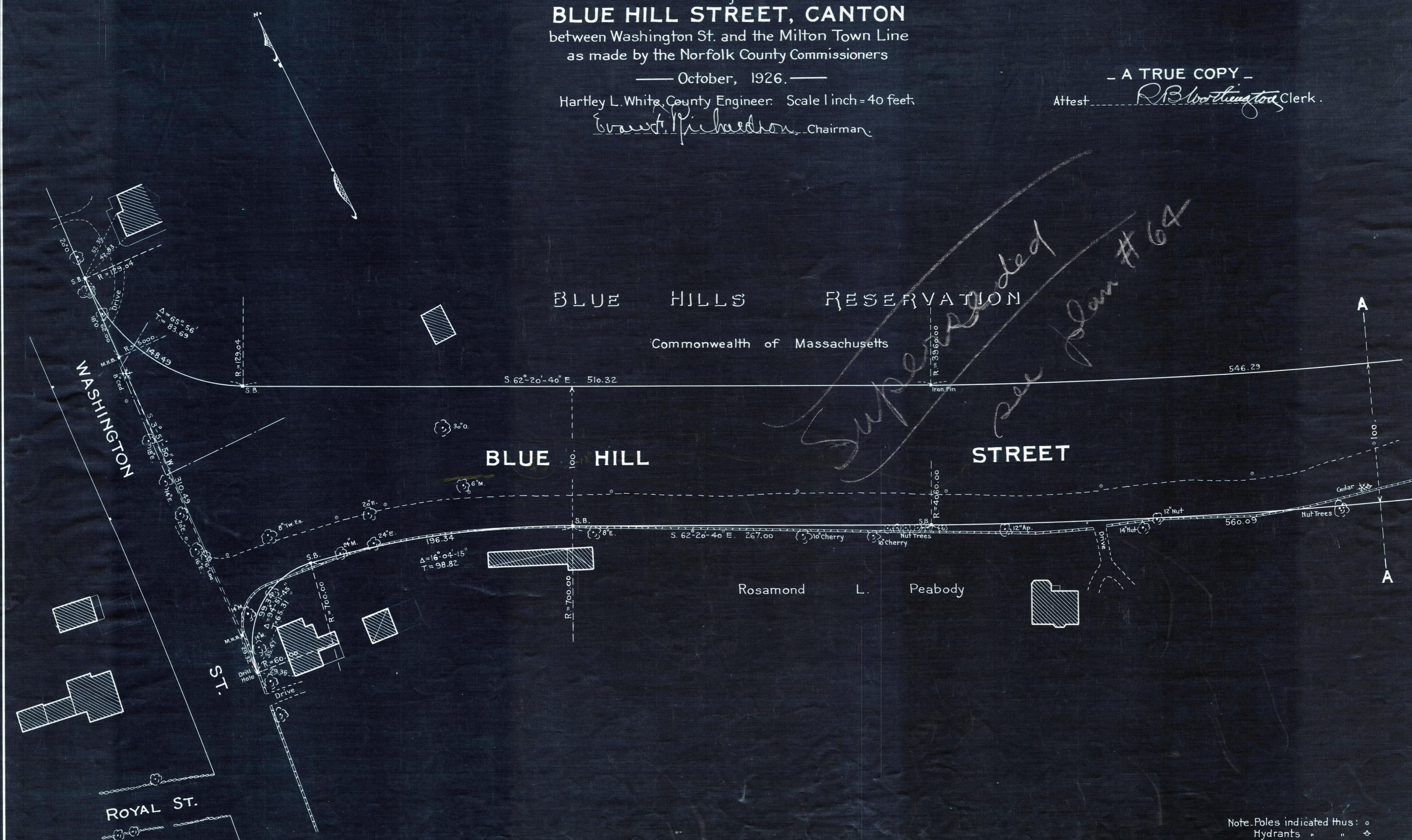
— October, 1926. —

Hartley L. White, County Engineer. Scale 1 inch = 40 feet.

Edward Richardson, Chairman.

— A TRUE COPY —

Attest *R.B. Worthington* Clerk.



Note: Poles indicated thus: ○
Hydrants " " ◇

Date of Decree Oct 5, 1926