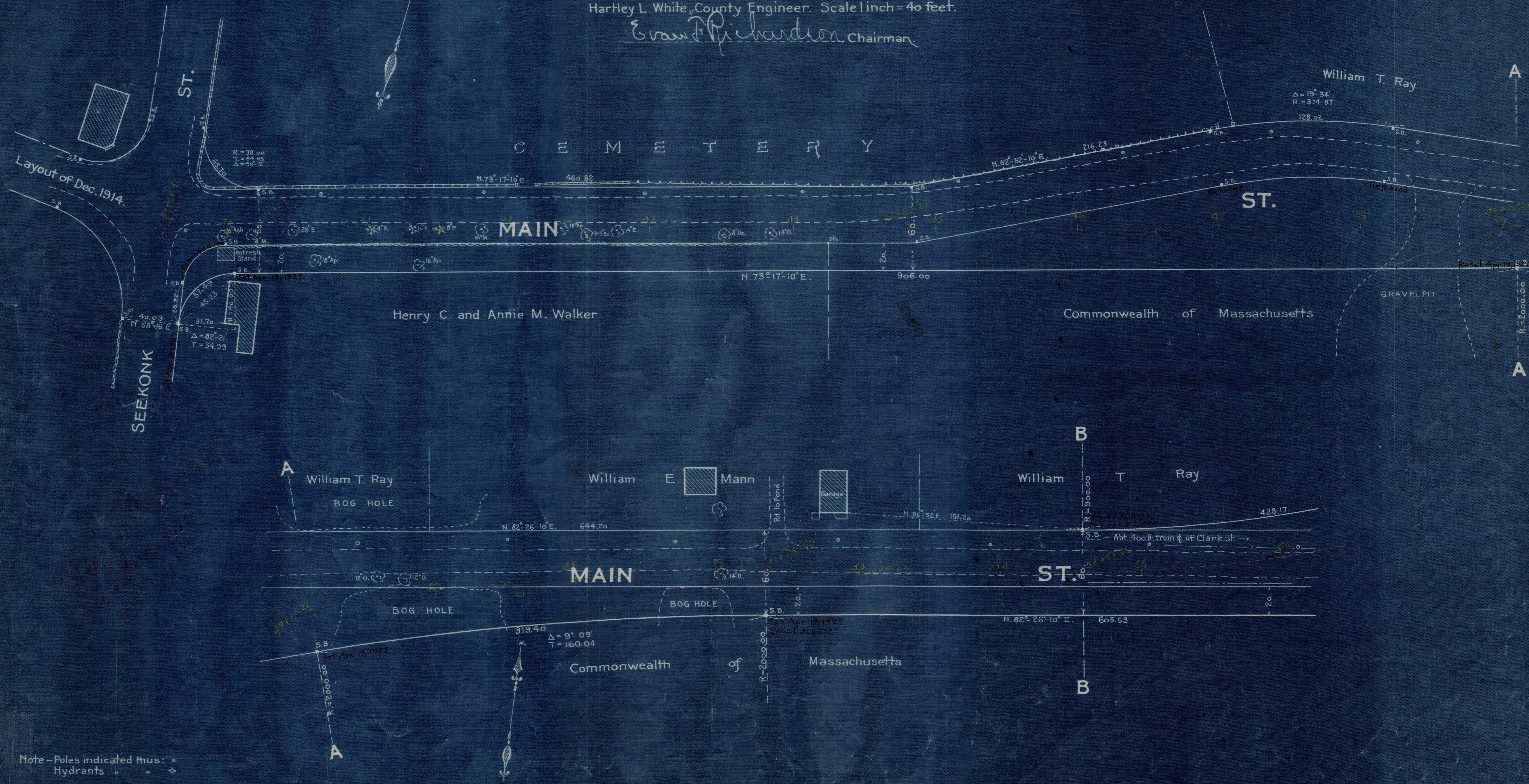


Plan showing the Relocation and Widening
 of
MAIN STREET, NORFOLK
 between Seekonk St. and the Walpole Town Line
 as made by the Norfolk County Commissioners
 — September, 1926. —
 Hartley L. White, County Engineer. Scale 1 inch = 40 feet.
Erwin P. Richardson, Chairman

— A TRUE COPY —
 Attest *R.B. Worthington*, Clerk.



Note - Poles indicated thus:
 Hydrants " " " " " "

Date of Entry Nov 15, 1927.