

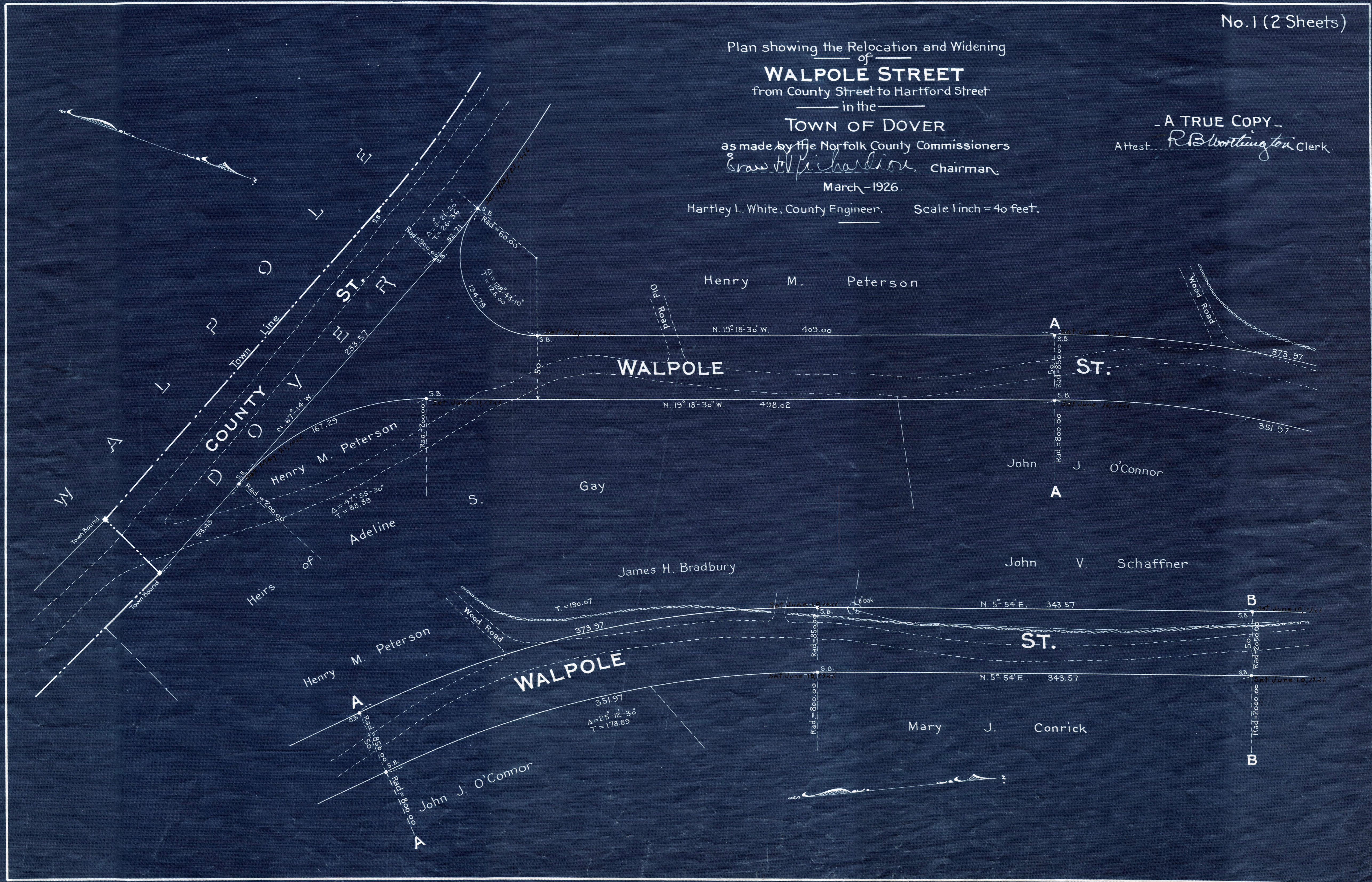
Plan showing the Relocation and Widening  
**of**  
**WALPOLE STREET**  
 from County Street to Hartford Street  
 in the  
**TOWN OF DOVER**

as made by the Norfolk County Commissioners  
*E. W. Richardson* Chairman  
 March - 1926.

Hartley L. White, County Engineer. Scale 1 inch = 40 feet.

A TRUE COPY

Attest *R. B. Worthington* Clerk.



Date of Deeds March 1926