

Plan showing the Relocation and Widening
of

BALTIMORE STREET

from

The Millis Town Line about 470 ft. southerly
in the

TOWN OF NORFOLK

as made by the Norfolk County Commissioners

Wm F. Richardson Chairman.

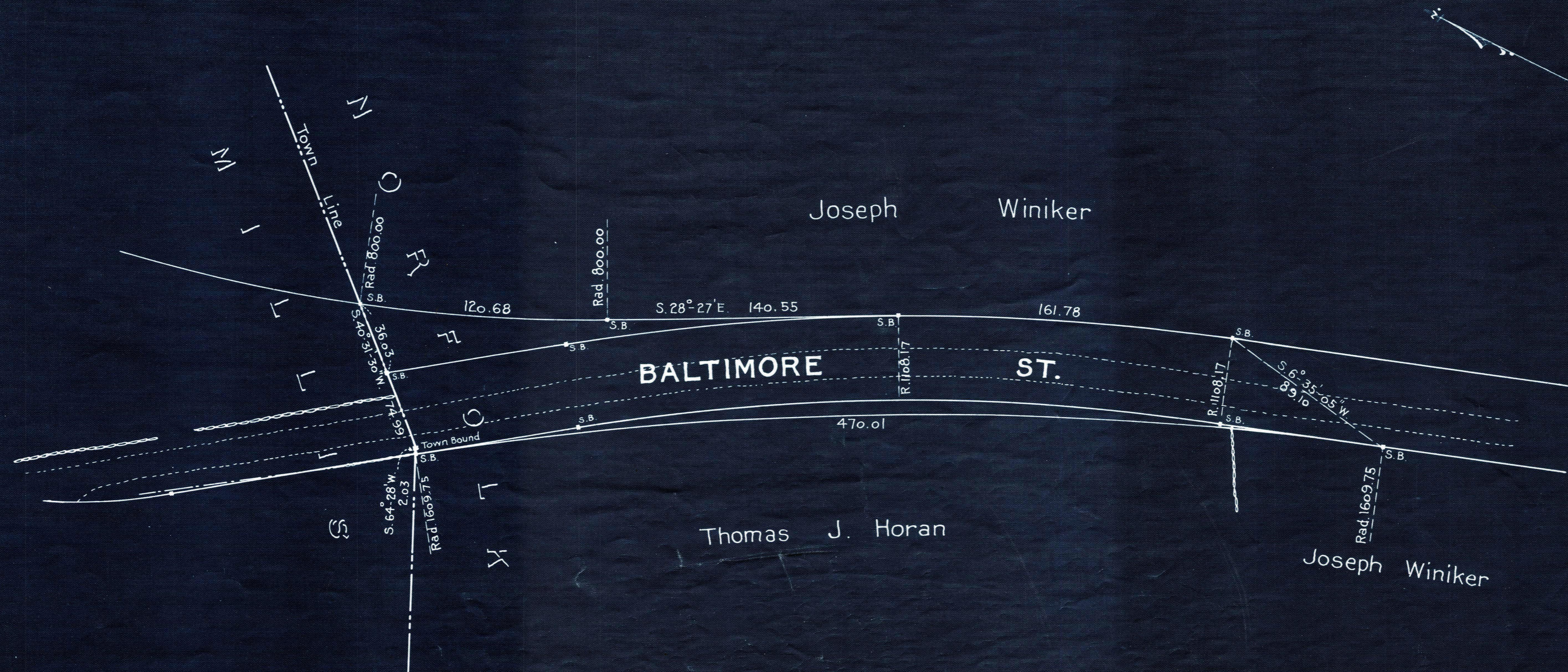
Hartley L. White, Civil Engineer.

Scale 1 inch = 40 feet.

Surveyed January, 1925.

A TRUE COPY

Attest *R. B. Worthington* Clerk.



Part of the original plan