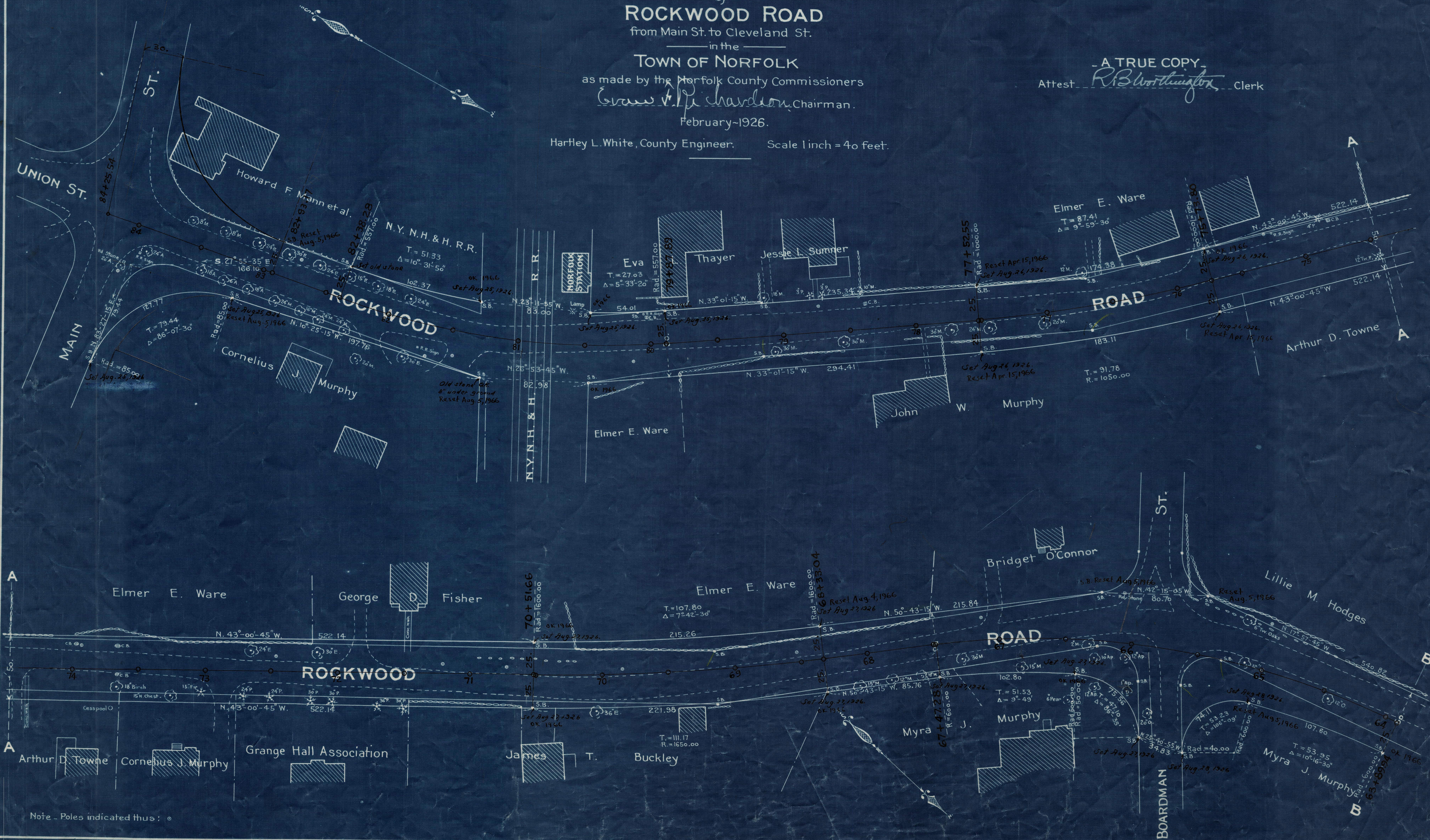


Plan showing the Relocation and Widening
of
ROCKWOOD ROAD
from Main St. to Cleveland St.
in the
TOWN OF NORFOLK

as made by the Norfolk County Commissioners
Ernest V. Richardson, Chairman.
February, 1926.

Hartley L. White, County Engineer. Scale 1 inch = 40 feet.

- A TRUE COPY -
Attest *R.B. Worthington* Clerk



Note - Poles indicated thus : ⊙