

Plan showing the Relocation and Widening

CENTRAL STREET

Between the Sharon Town Line and Canton St.

in the

TOWN OF STOUGHTON

as made by the Norfolk County Commissioners.

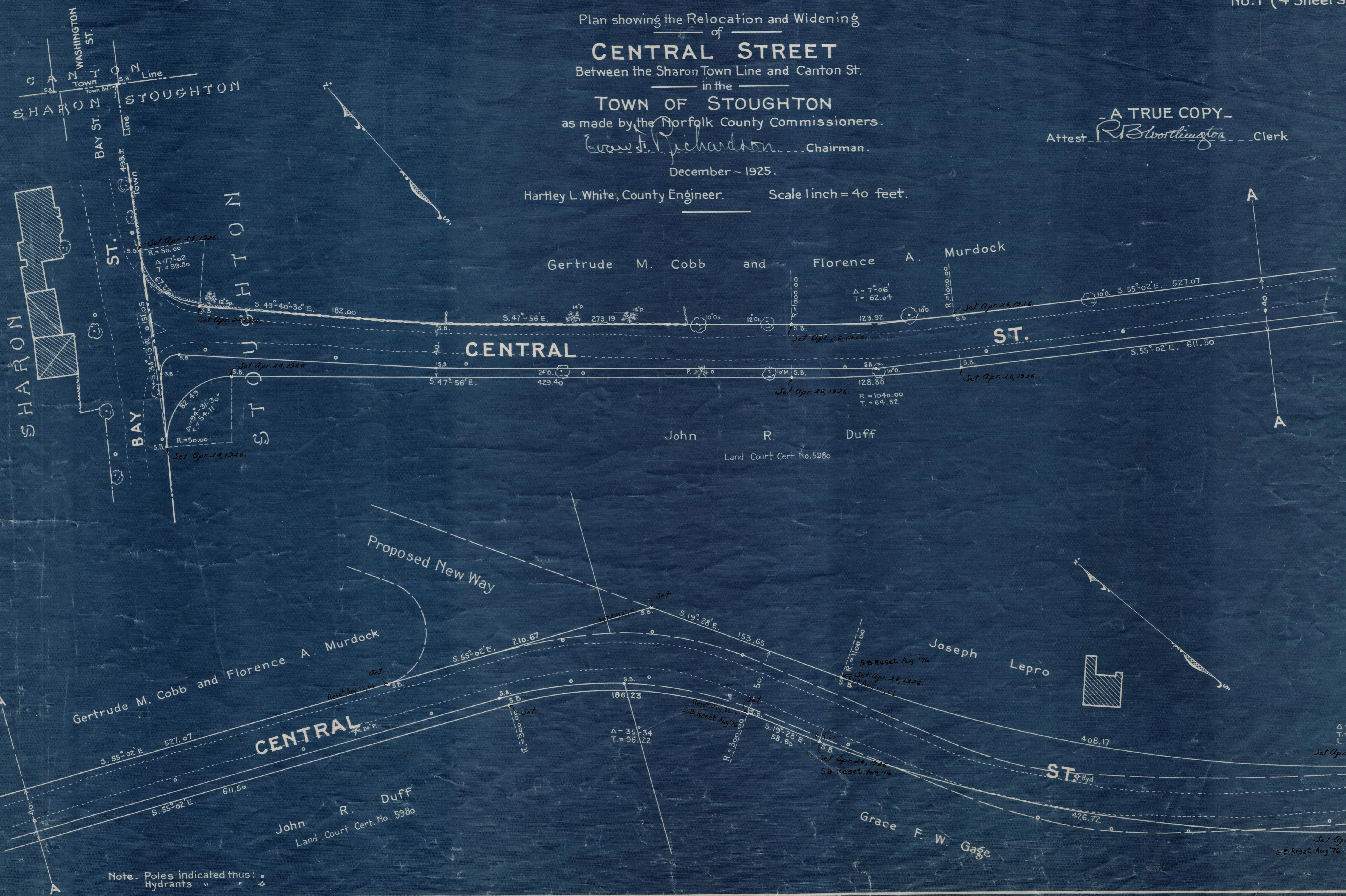
Ernest Richardson Chairman.

December ~ 1925.

Hartley L. White, County Engineer.

Scale 1 inch = 40 feet.

A TRUE COPY
Attest *R. B. Worthington* Clerk



Note - Poles indicated thus: ○
Hydrants " " ⊕

$\Delta = 42^{\circ} 31' 15''$
 $T = 428.00$
 $L = 816.34$
 Set Apr. 27, 1926

$\Delta = 35^{\circ} 34'$
 $T = 96.22$
 R = 300.00
 Set Apr. 26, 1926
 S.B. Reset Aug '76

$\Delta = 42^{\circ} 31' 15''$
 $T = 428.00$
 $L = 816.34$
 Set Apr. 27, 1926

$\Delta = 42^{\circ} 31' 15''$
 $T = 428.00$
 $L = 816.34$
 Set Apr. 27, 1926